

# Welcome to the CREWES Sponsors Meeting Nov. 28 – Nov. 30, 2007 in Banff, Alta



# CREWES Overview

Advanced research and education in  
geophysical exploration in partnership  
with the resource industry

*Specifically, to develop seismic and  
logging methods to image and monitor  
the subsurface and its fluids*

# CREWES People & Funding

- 6 faculty investigators, 10 research geophysicists and support staff
- 35 graduate students
- Supporters
  - 30 industrial sponsors
  - NSERC (Gov't of Canada)
  - Alta. Govt.
- *Graduated over 80 M.Sc. & Ph.D. students, 6 start-up companies, numerous 3/4C seismic surveys, 3 SEG products*

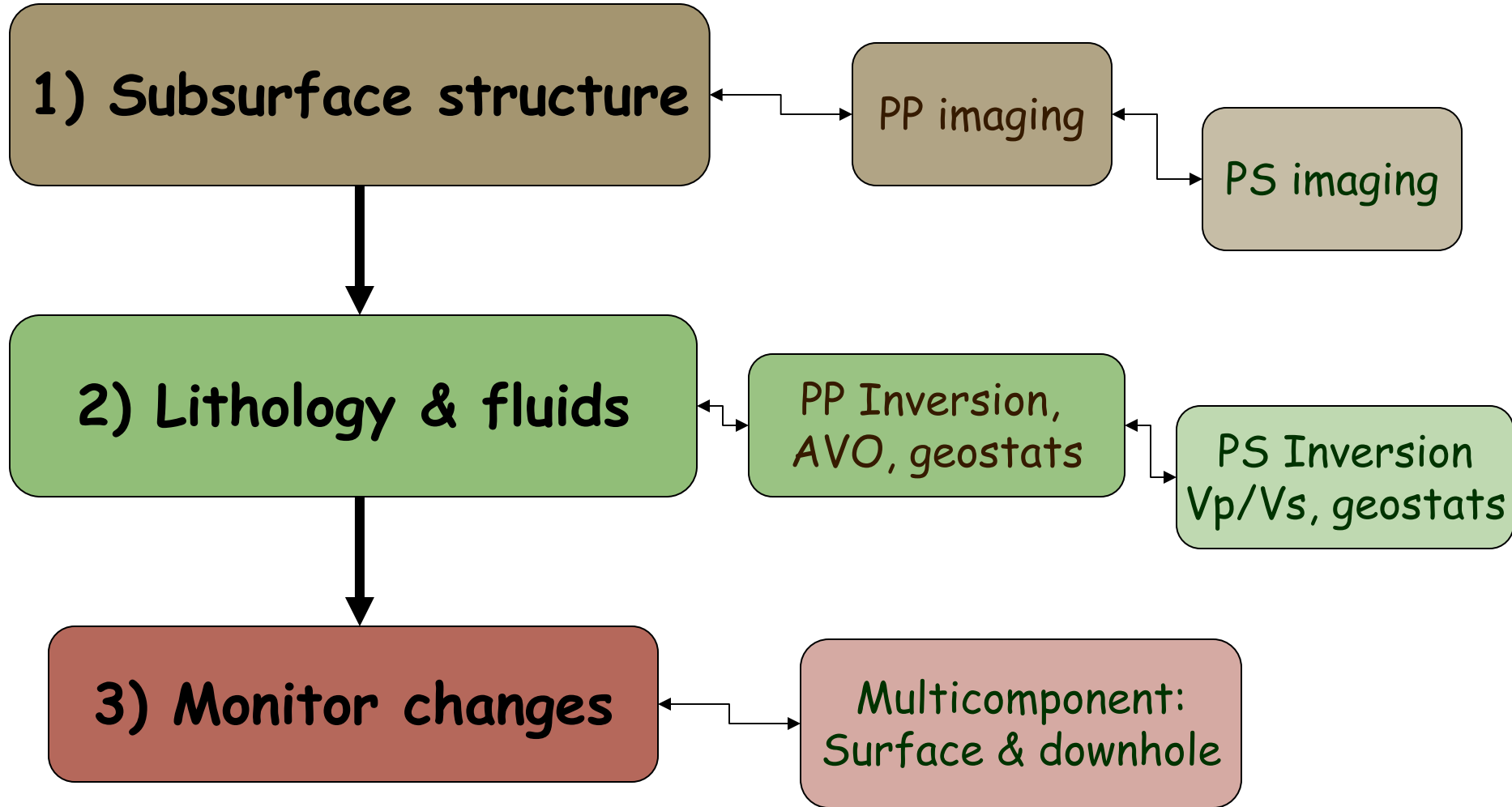


# CREWES deliverables

Reports  
presentations  
software  
data  
course



# Exploration needs and seismic methods



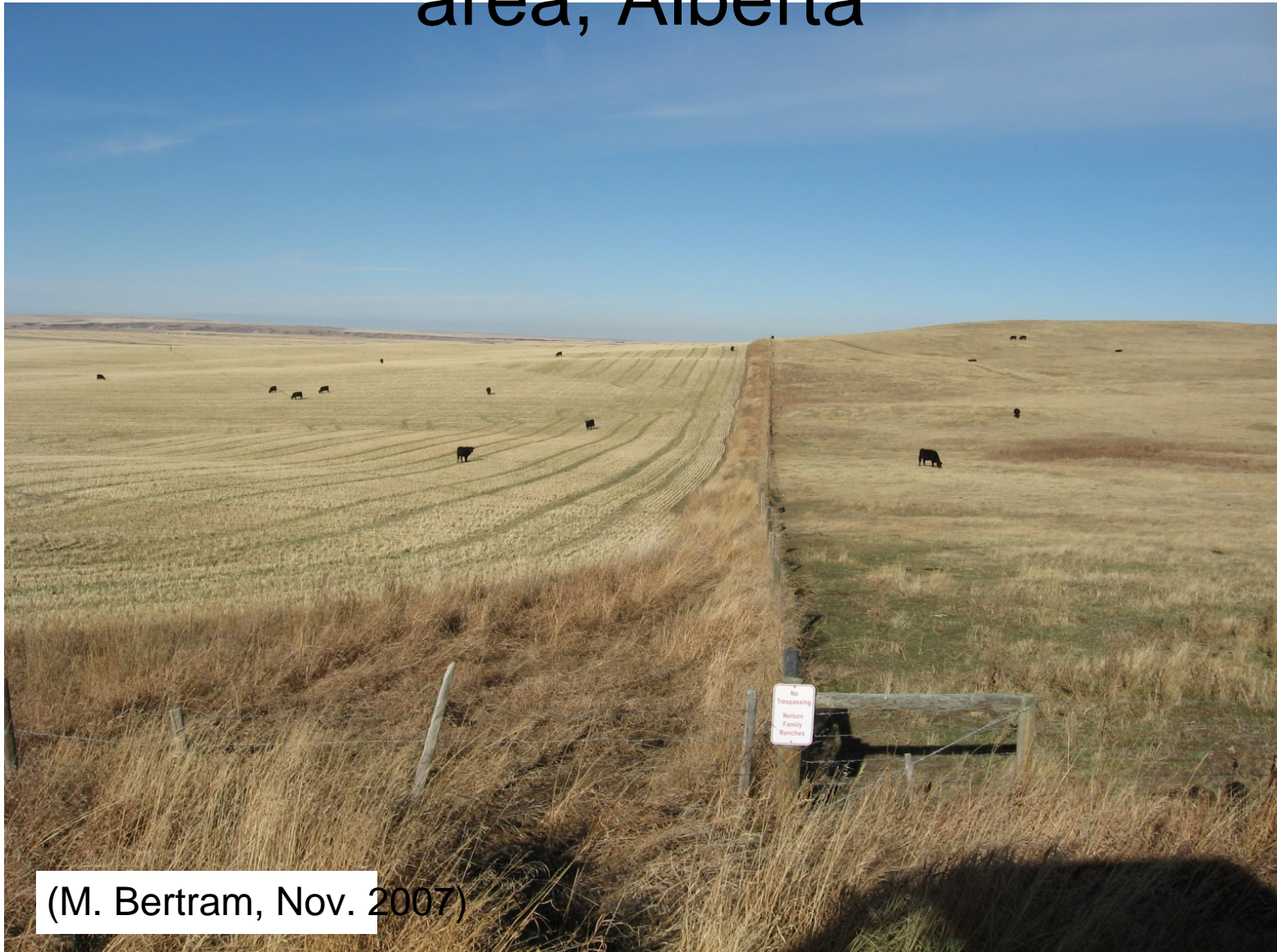
# What are we trying to do, again?

- Provide better structural images of the subsurface
- Determine lithologic information (rock type)
- Describe rock properties (poro., frags, perm.)
- Estimate fluid content
- Monitor reservoir changes
- Help find & recover underground stuff!

# What has 2007 brought CREWES?

- People
  - Recent faculty: Ferguson, Eaton, + 2 more
  - Students (largest geoscience in North America)
- Equipment
  - Well logging, VSP, lab, robotics
  - Computing, new offices
- Many projects
  - Priddis test site
  - Chevron, Imperial, Calroc, Boyd 3C-3Ds

# Photograph of the Spring Coulee survey area, Alberta

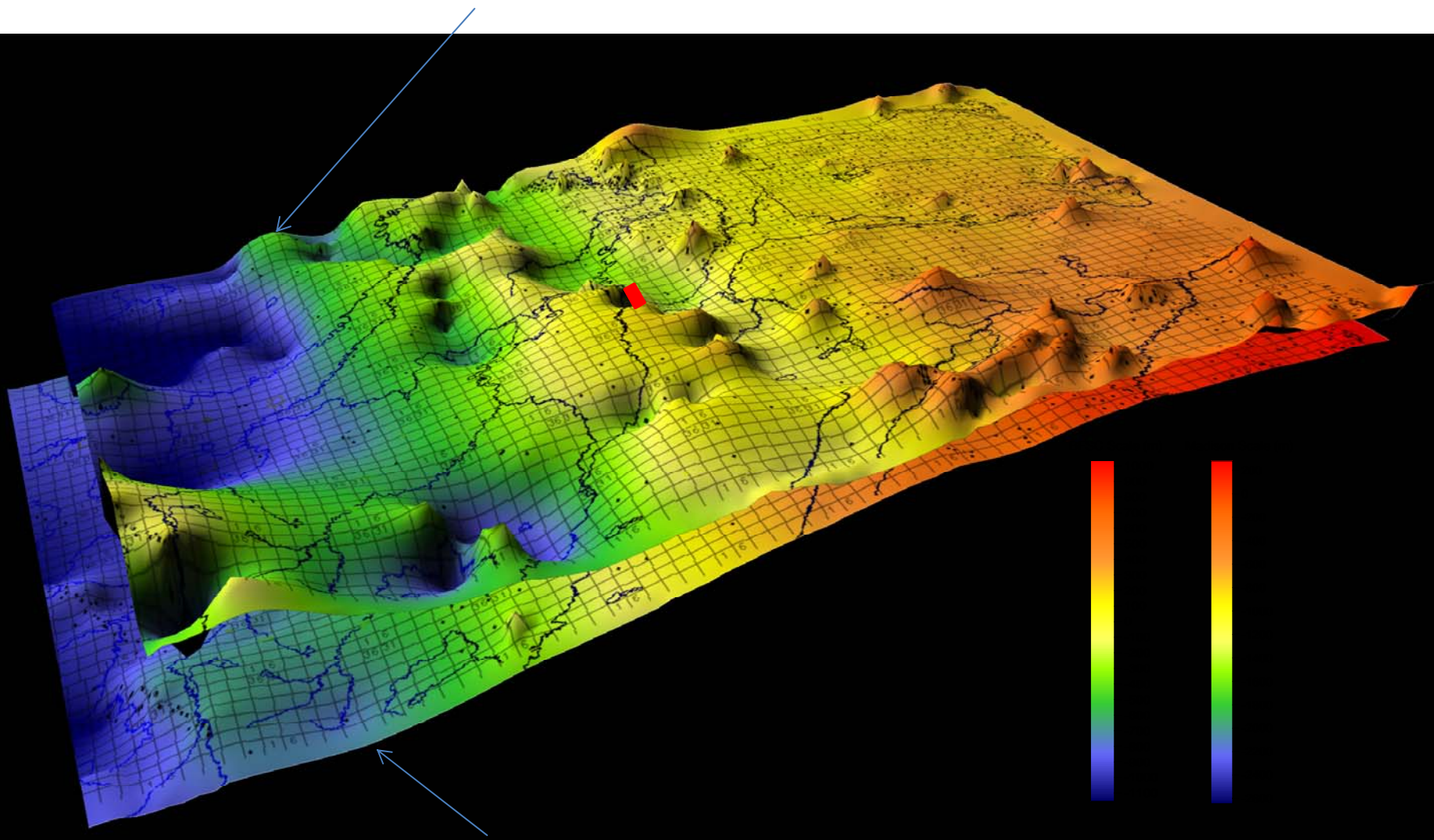


(M. Bertram, Nov. 2007)





Base of Fish Scale



# And now, presentations, papers, & posters on....

- Geophone/accelerometer theory & testing
- Field and lab data acquisition
- Wellbore (logs & VSP) geophysics
- Wave propagation (mathematics & modeling)
- Seismic data processing, imaging, & inversion
- Interpretation & case histories

# CREWES Sponsors Meeting Schedule

- Thursday 8:30-11:30am
  - Acquisition & Borehole
- Thursday 1pm-4:30pm
  - Modeling & analysis
- Friday 8:30-11:30am
  - Imaging & Inversion
- Friday 1-4:30pm
  - Interpretation & Cases



Geophysics Field School 2007