

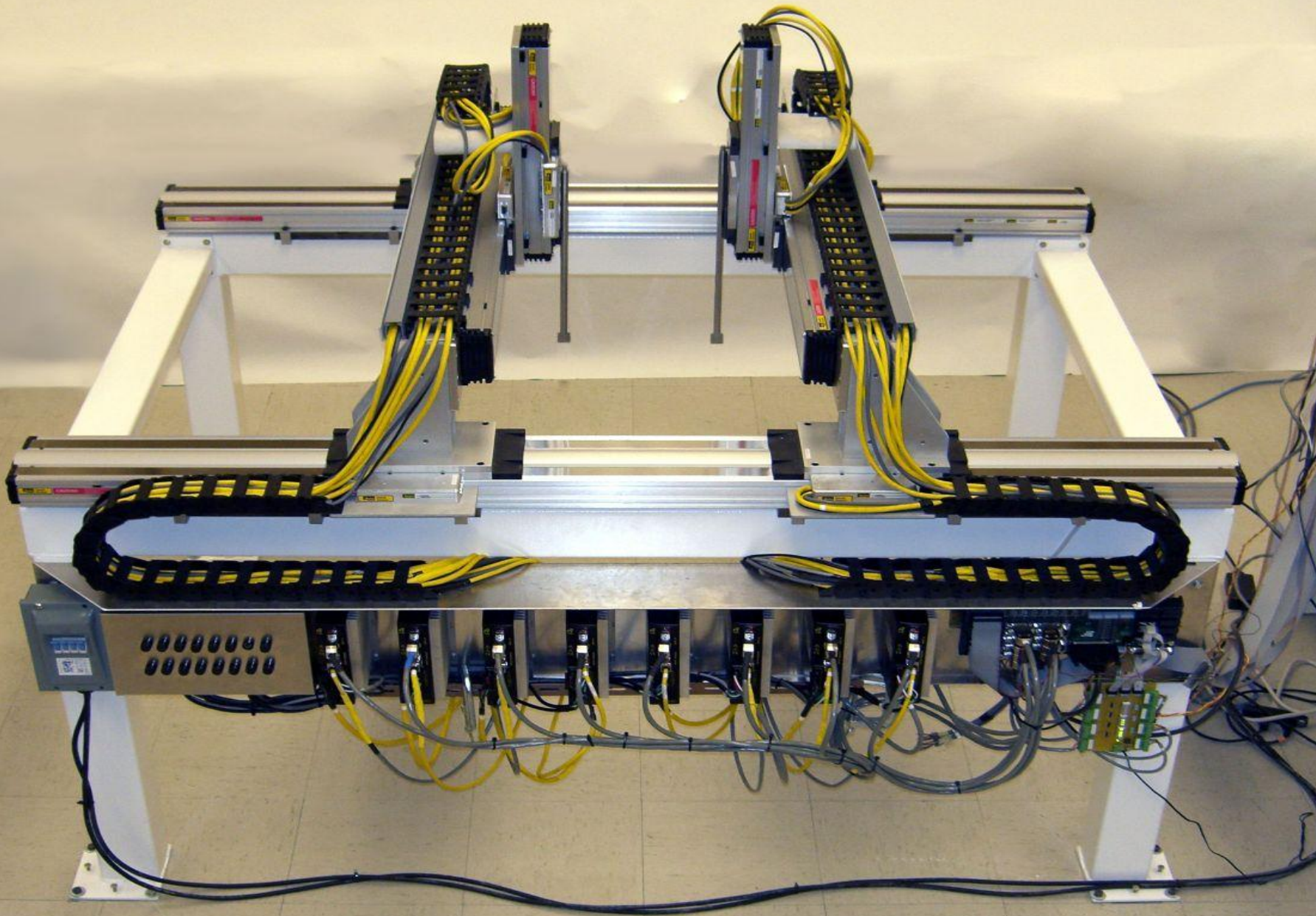
UPDATE ON THE SEISMIC PHYSICAL MODELLING FACILITY

***Joe Wong, Kevin Hall, Eric Gallant, Rolf Maier,
and Malcolm Bertram***



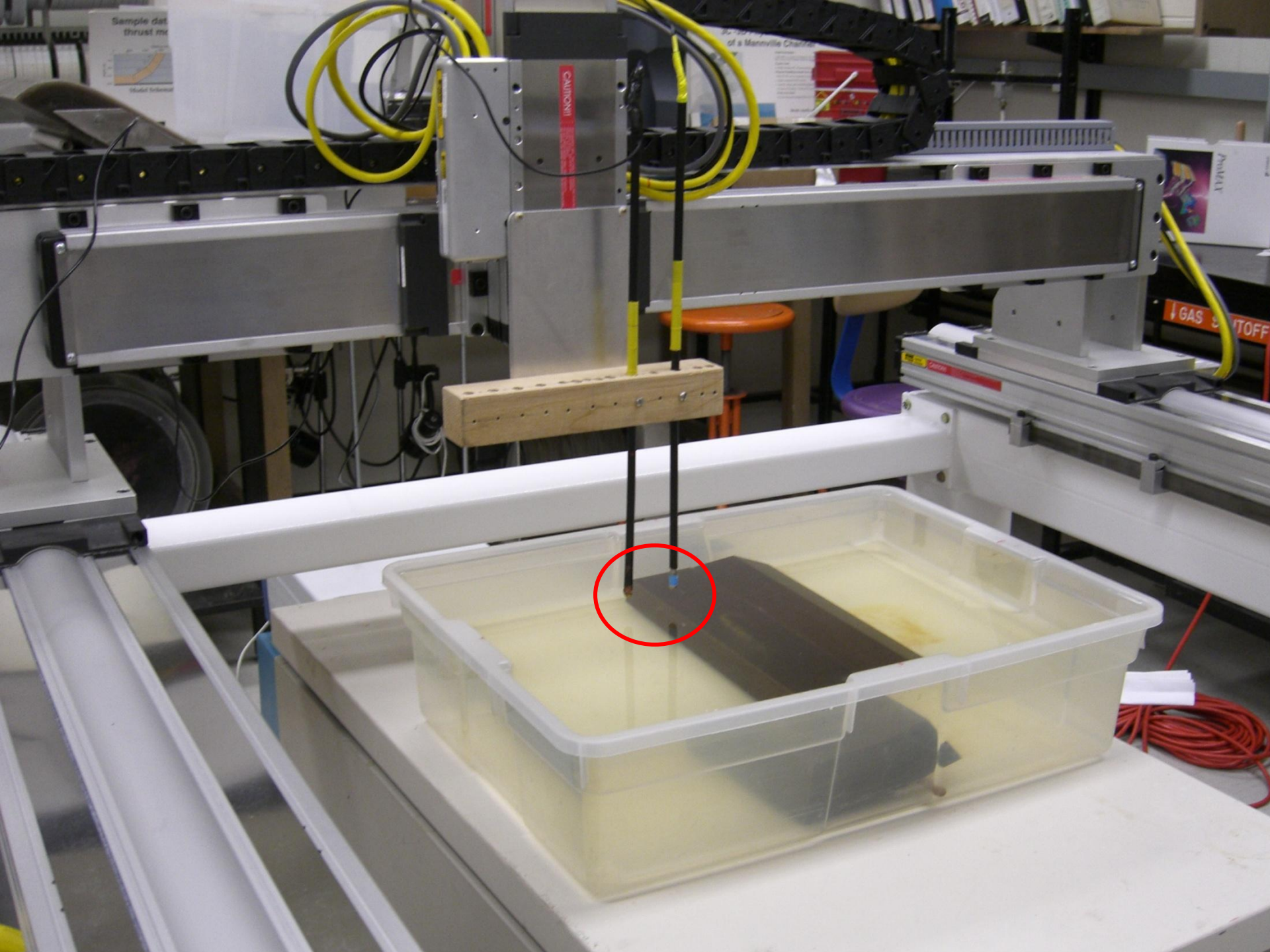
OUTLINE:

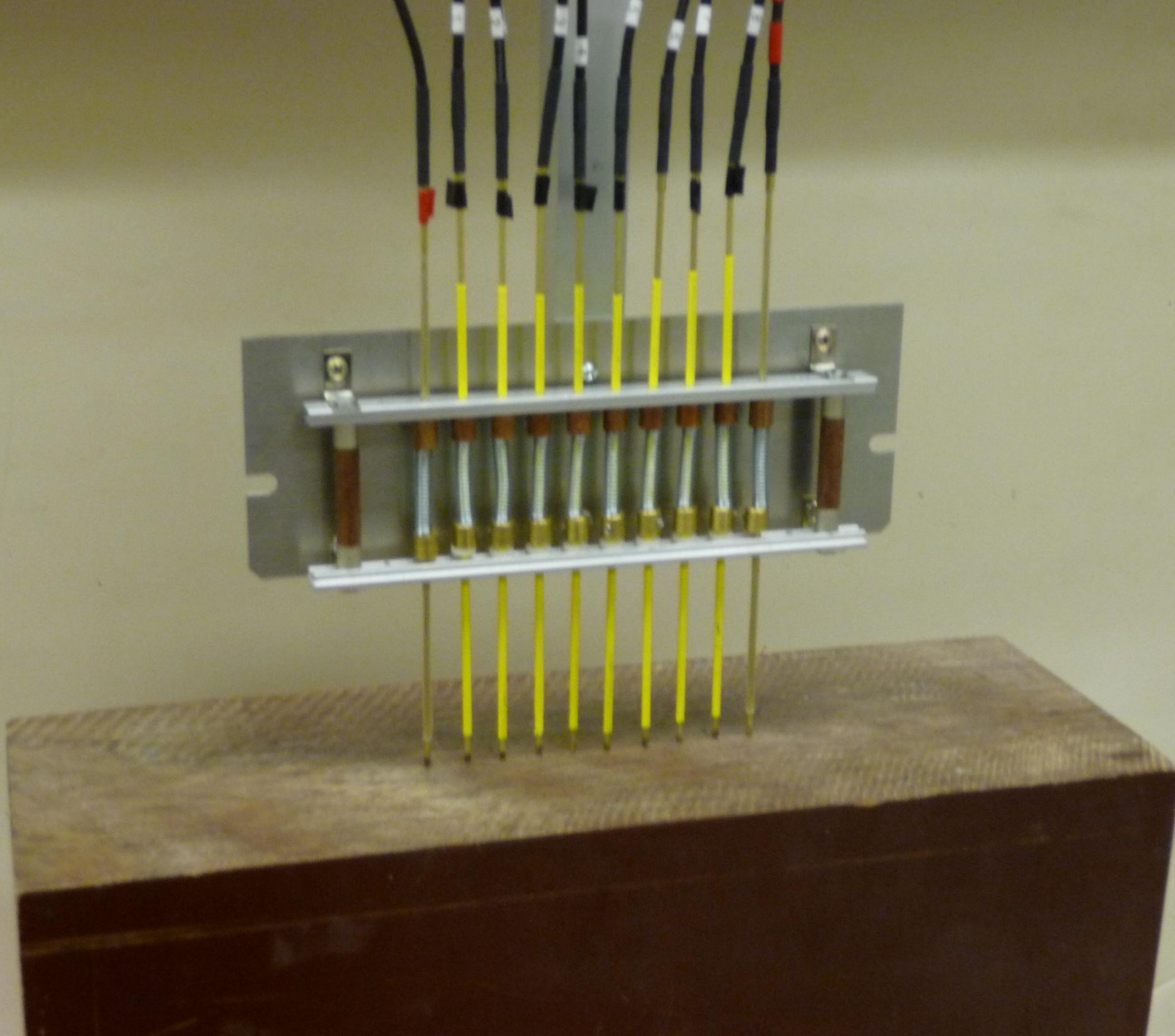
- ***Introduction***
- ***Positioning System***
- ***Transducers and Arrays***
- ***Master Control Program***
- ***Testing and Test Data***
- ***Concluding Remarks***
- ***Acknowledgements***

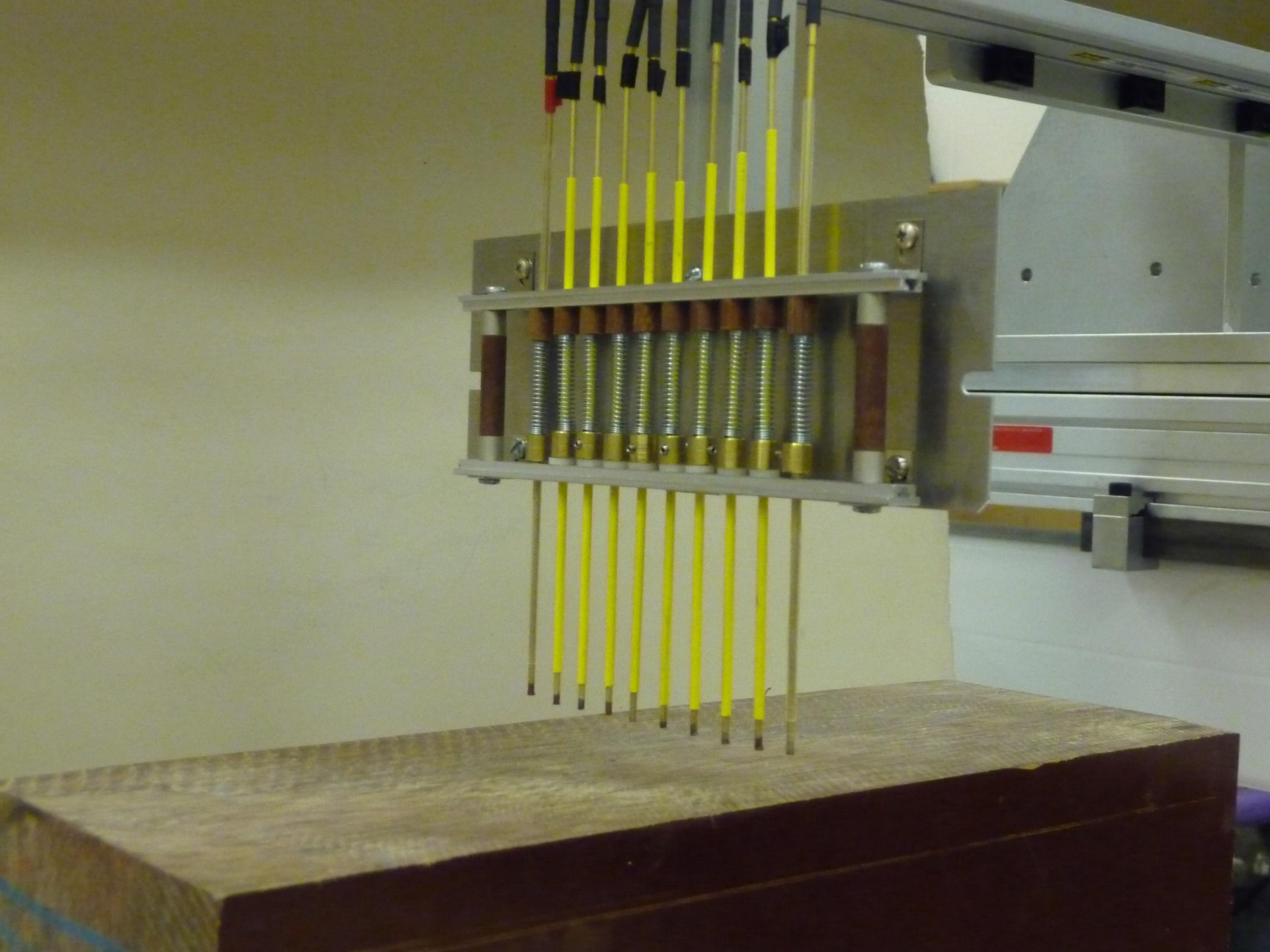


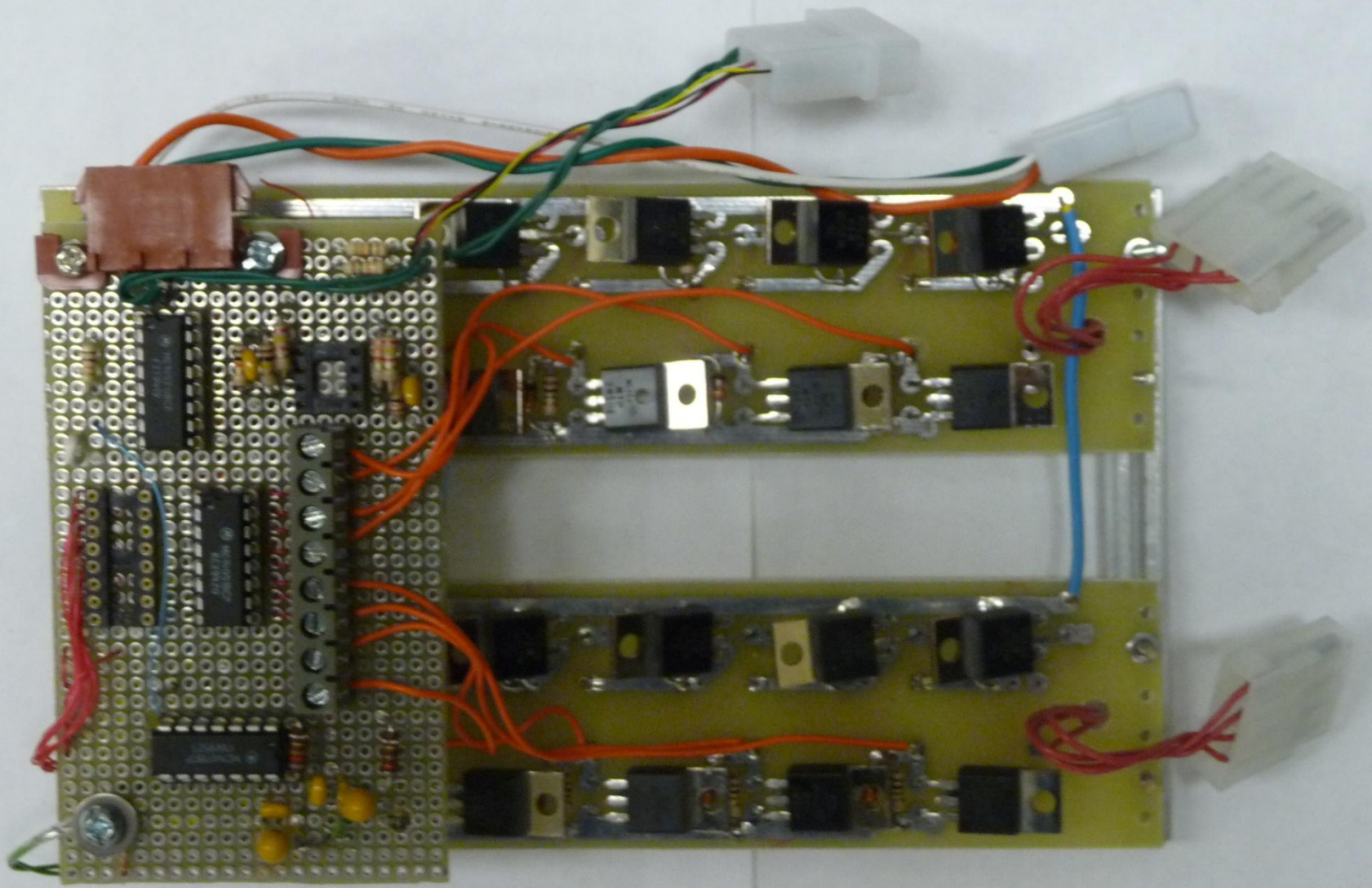
Transducer Types :

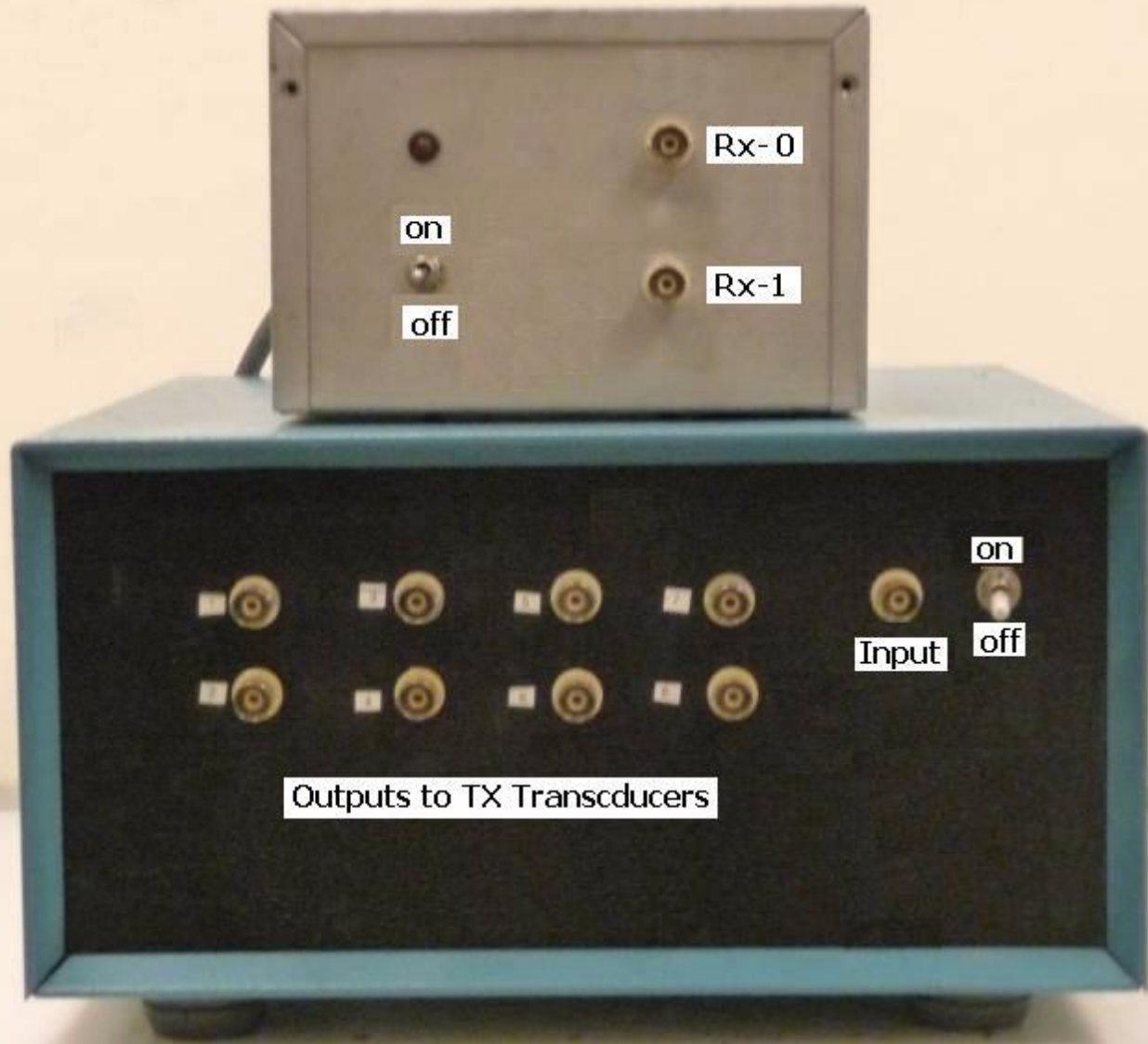
- ***Hemispheres***
- ***Piezopins***











on

Rx-0

off

Rx-1

on

Input

off

Outputs to TX Transducers

Master Control Program:

Develop in Visual Studio IDE.

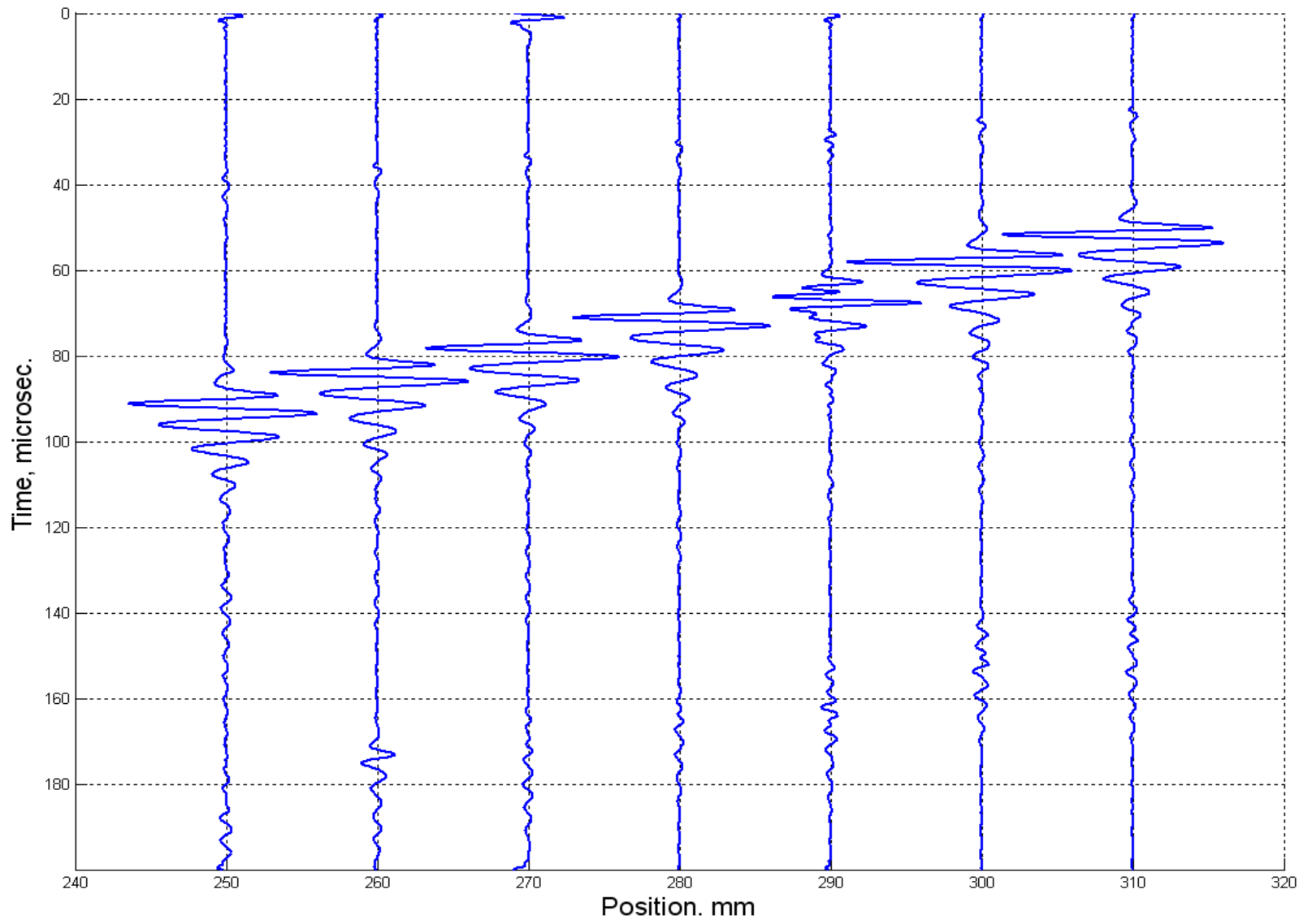
Combine motor control and A/D SDKs.

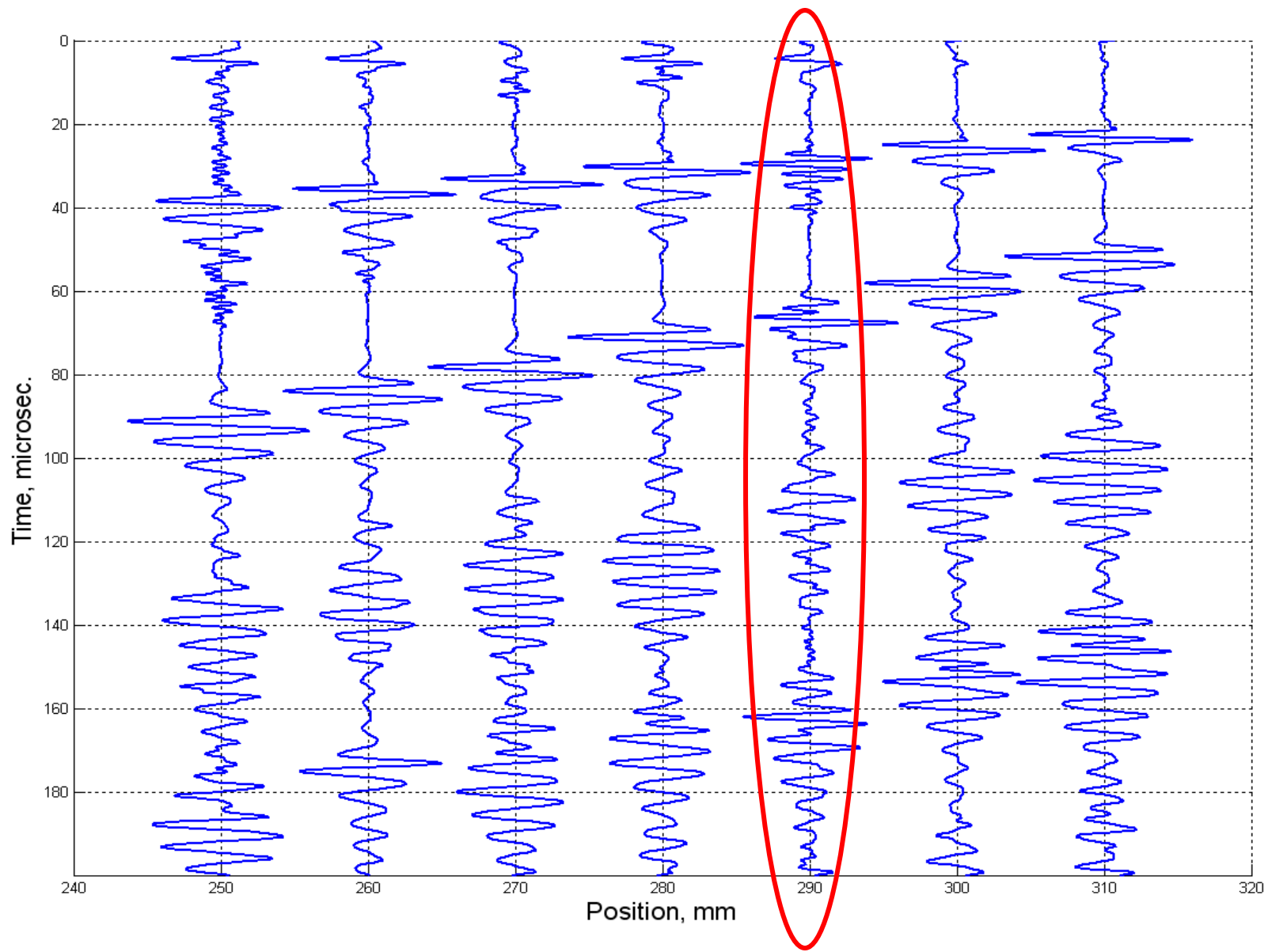
Synchronize automatic functions.

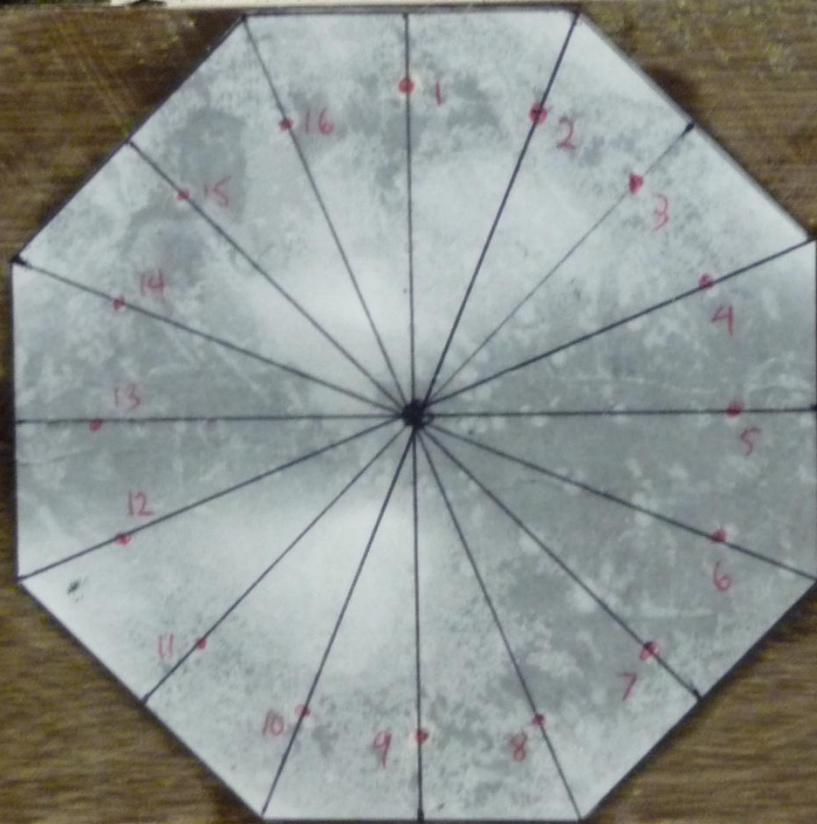
- ***move transducer arrays ;***
- ***activate specific Tx and Rx transducers ;***
- ***acquire seismic traces ;***
- ***save to file with geometry.***

Testing and Test Data









DANGER
PELIGRO
ATTENTION

TO AVOID PERSONAL INJURY READ OWNER'S MANUAL BEFORE OPERATING OR REPAIRING SCISSOR LIFT.

PARA EVITAR DAÑOS PERSONALES LEA EL MANUAL DEL PROPIETARIO ANTES DE OPERAR O REPARAR EL ELEVADOR DE TIJERAS.

POUR ÉVITER TOUTE BLESSURE PERSONNELLE LIRE LE MANUEL D'UTILISATION AVANT DE METTRE EN MARCHÉ OU AVANT DE RÉPARER L'ÉLEVATEUR CISEAU.



DO NOT PUT HANDS, FEET OR OBJECTS UNDER TOP. LOWER PLATFORM SLOWLY.

NO PONGA MANOS, PIES U OBJETOS DEBAJO DEL BORDE. DESCienda LA PLATAFORMA LENTAMENTE.

NE PAS METTRE LES MAINS, LES PIEDS OU TOUT OBJET SOUS LE PLATEAU SUPÉRIEUR. DESCENDRE LA PLATE-FORME LENTEMENT.



DO NOT WORK UNDER WHILE LOADED. KEEP MECHANISM.

NO TRABAJE DEBAJO SEGURIDAD O CUANDO ALEJADO DEL MECANISMO.

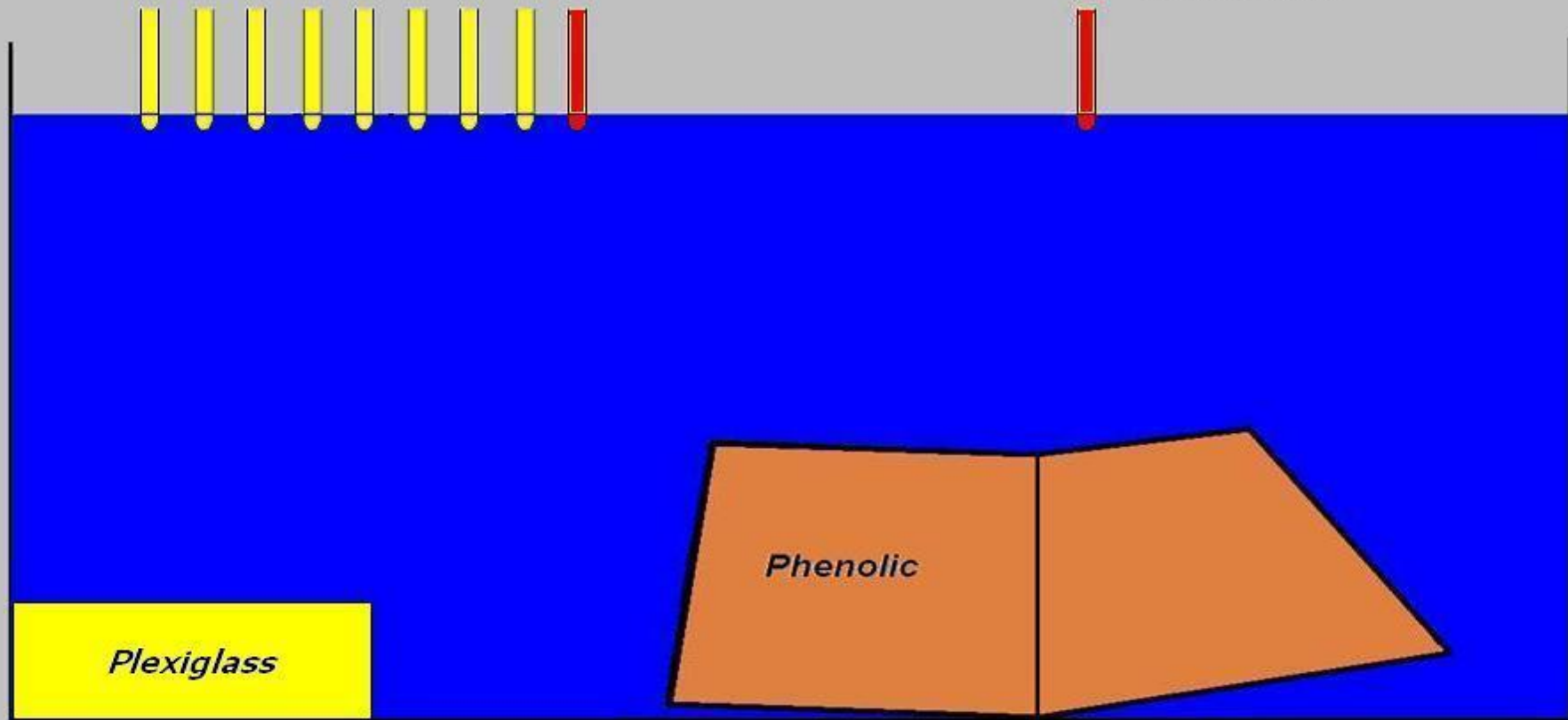
NE PAS TRAVAILLER SOUS L'ÉLEVATEUR LORSQU'IL EST CHARGÉ. RESTER À L'ÉLOIGNÉ DU MÉCANISME LORSQUE L'ÉLEVATEUR EST EN FONCTIONNEMENT.

Towed Array

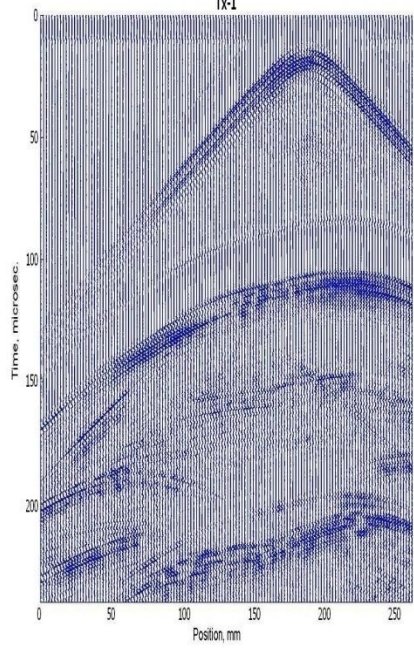
8 x TX

RX #2

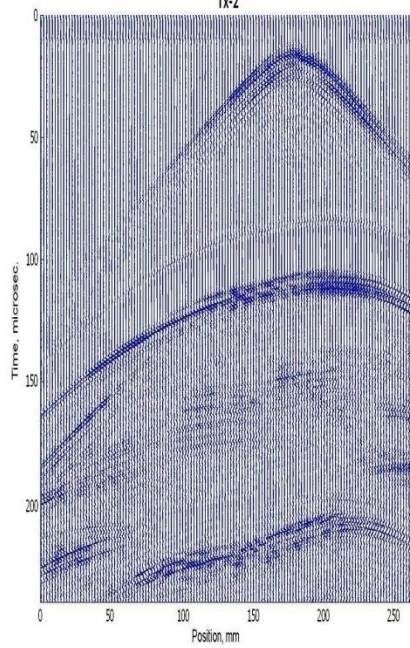
Fixed RX #1



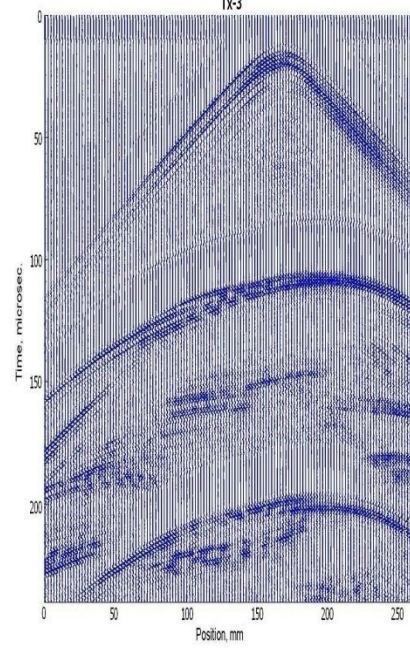
Tx-1



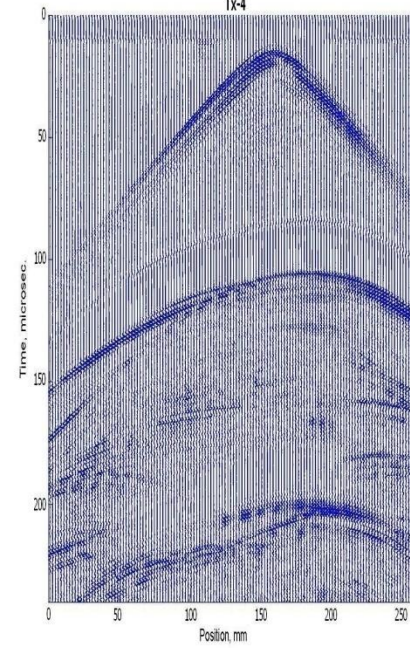
Tx-2



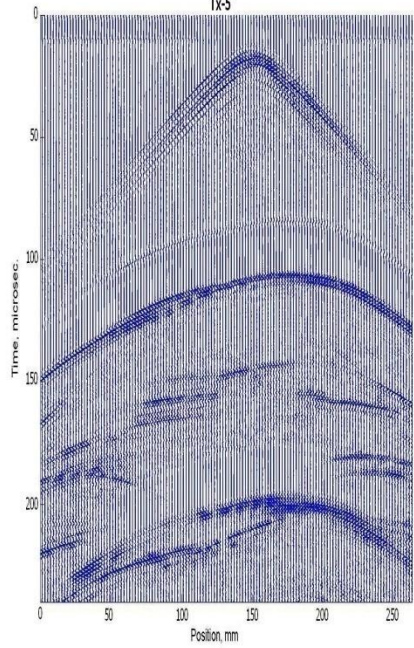
Tx-3



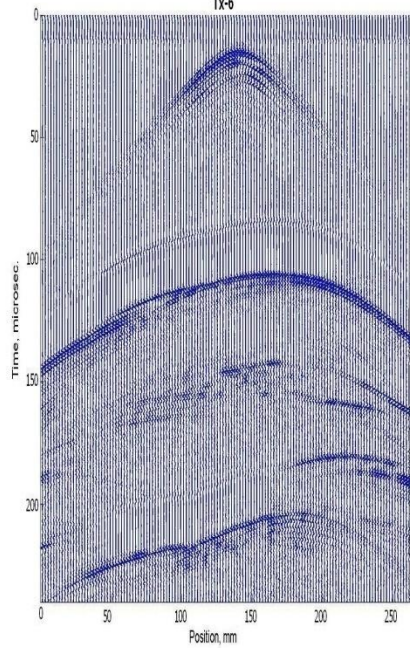
Tx-4



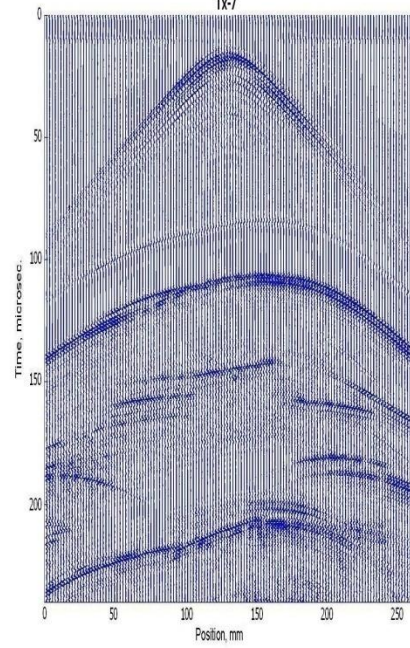
Tx-5



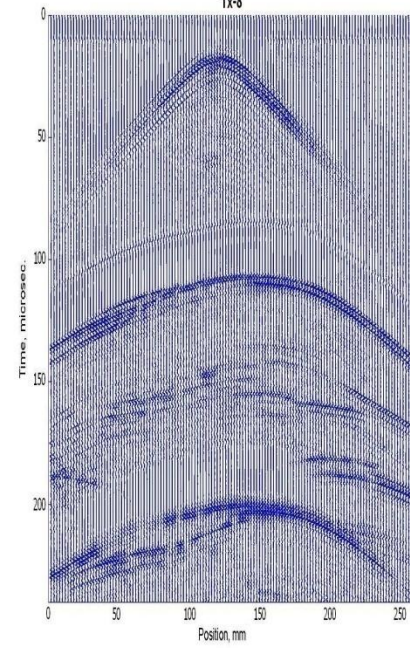
Tx-6

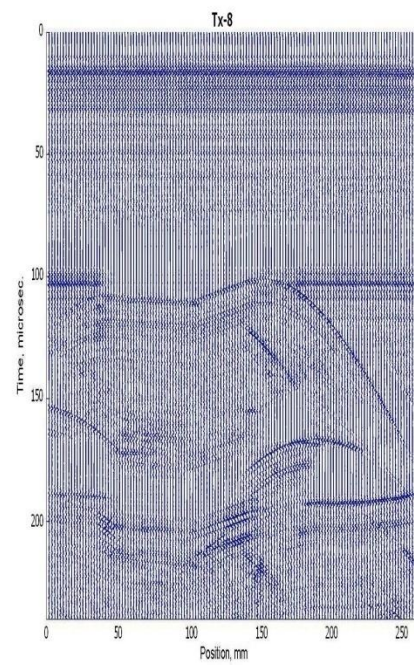
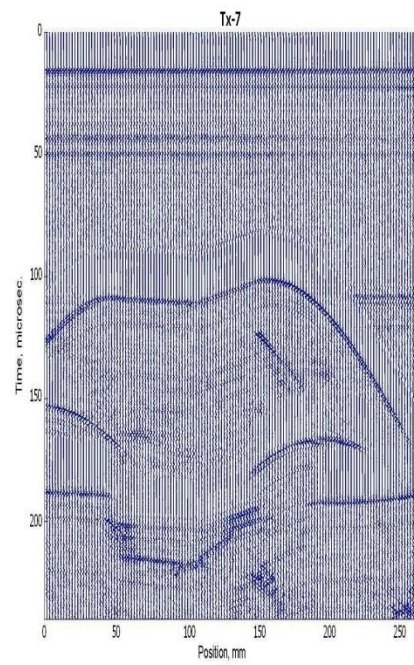
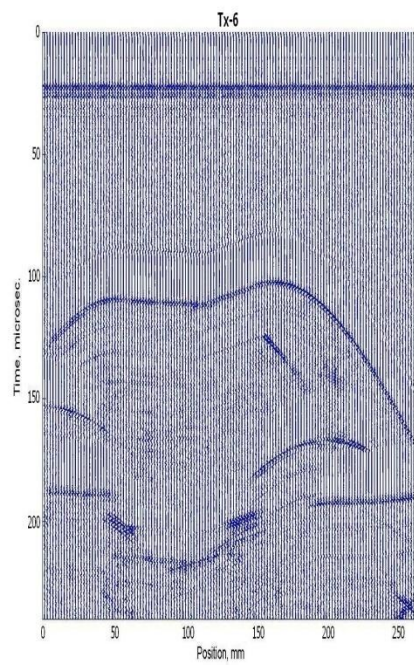
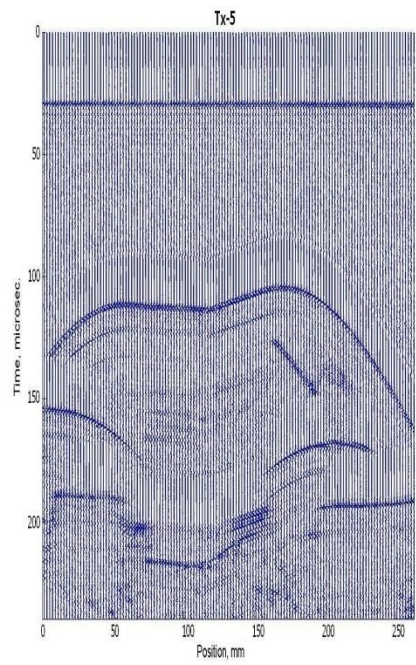
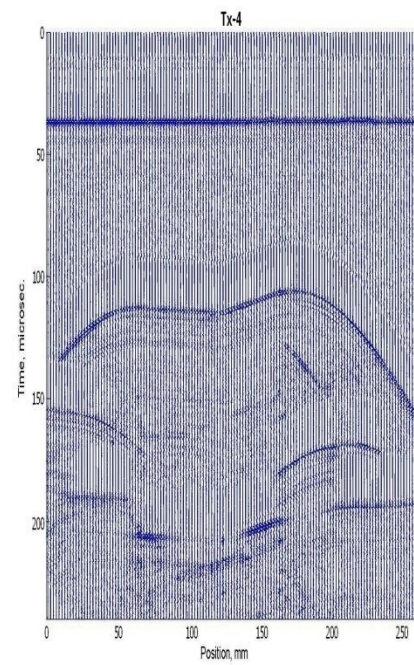
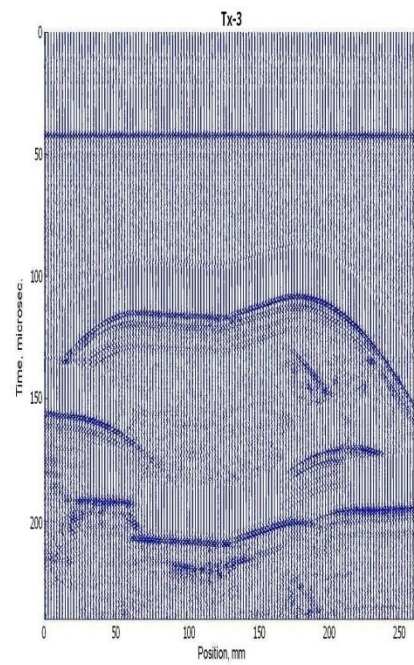
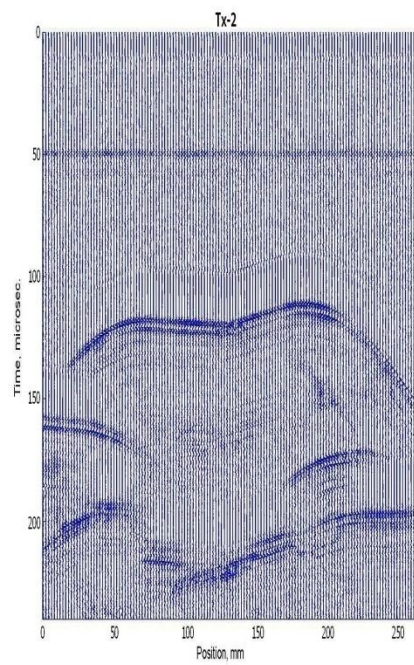
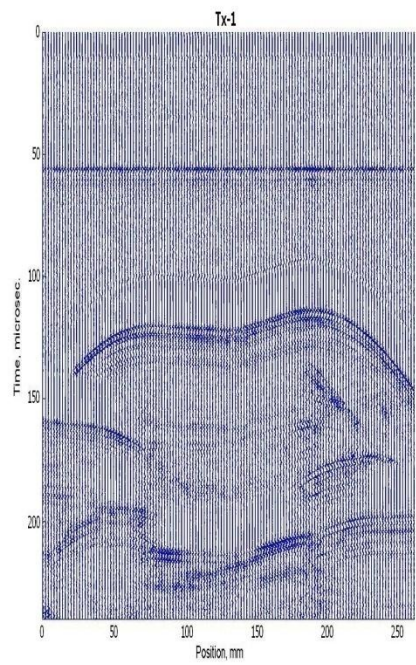


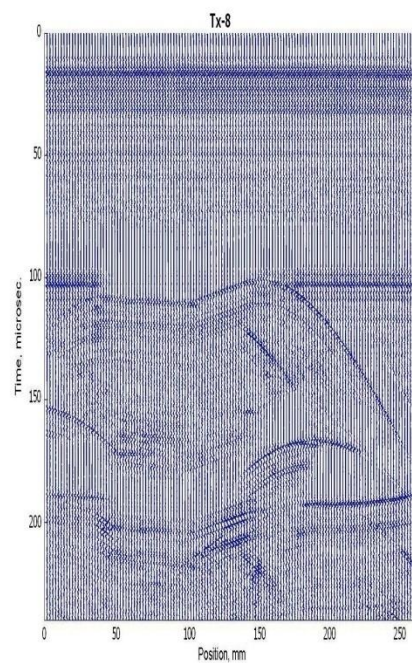
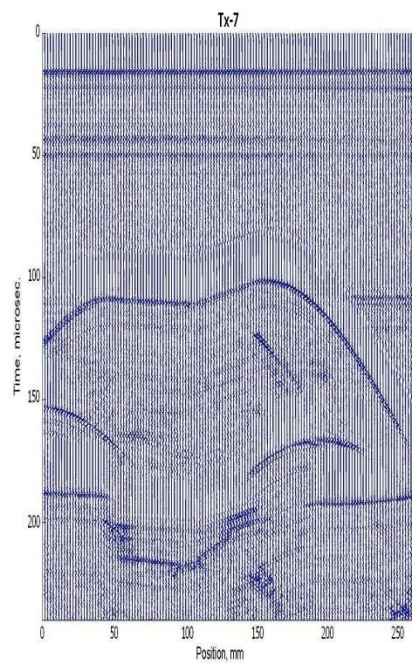
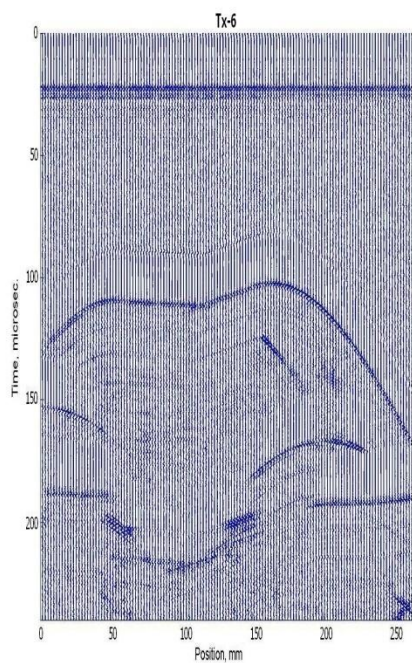
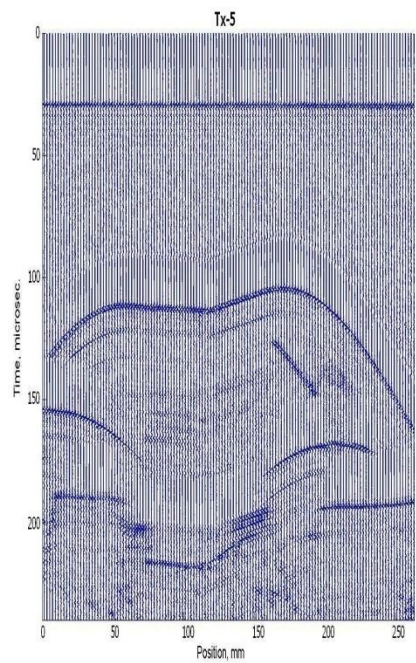
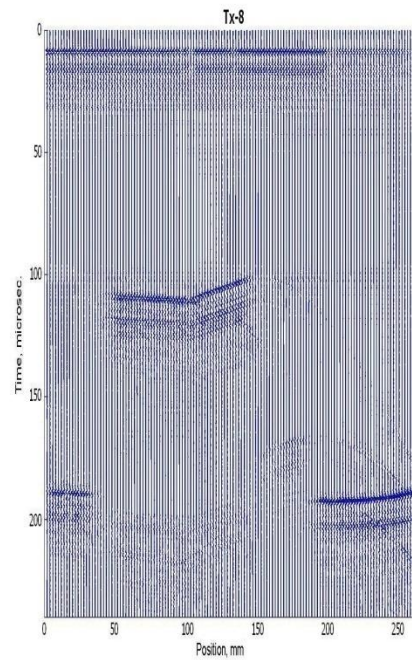
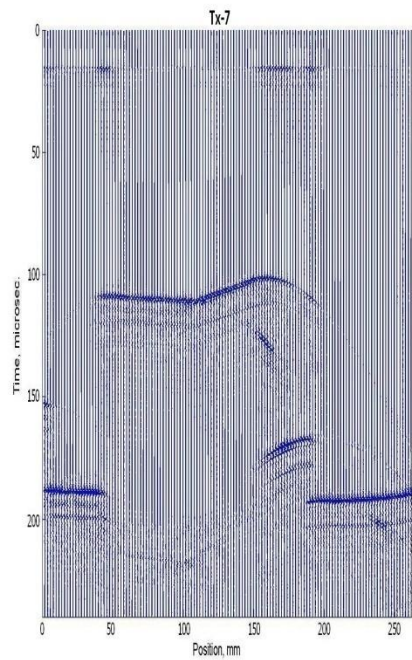
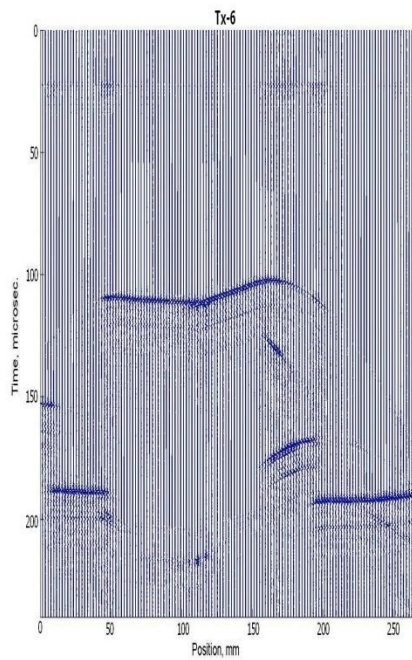
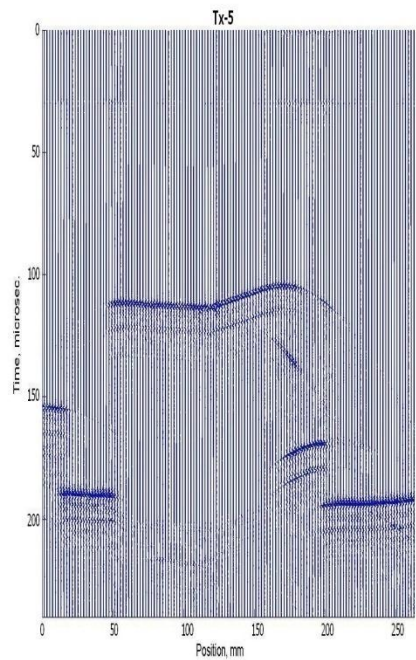
Tx-7

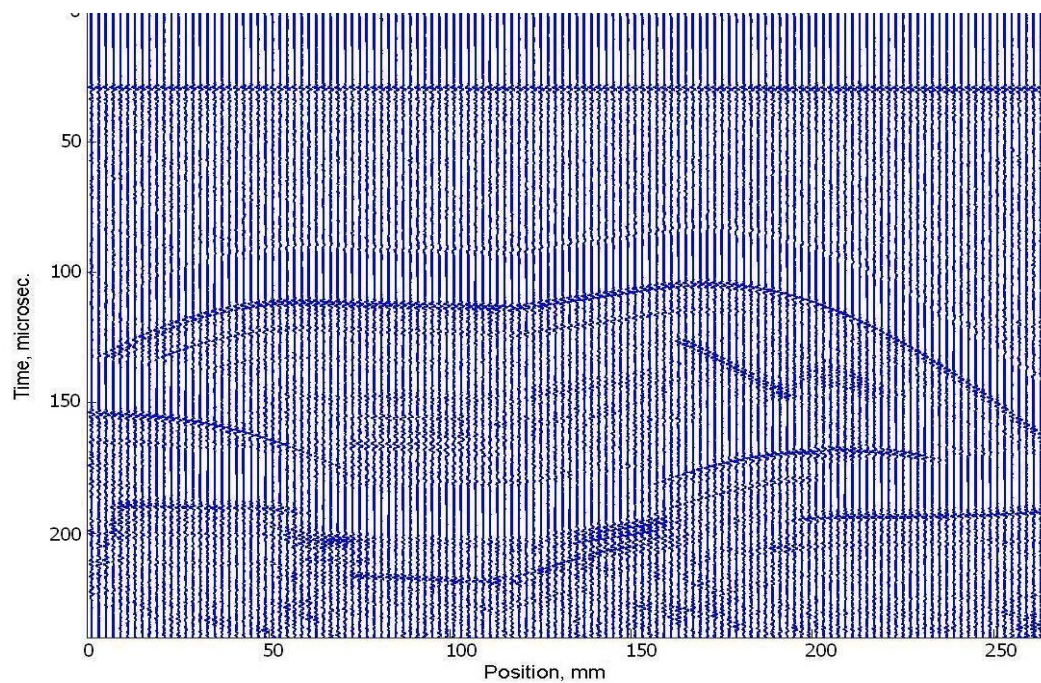
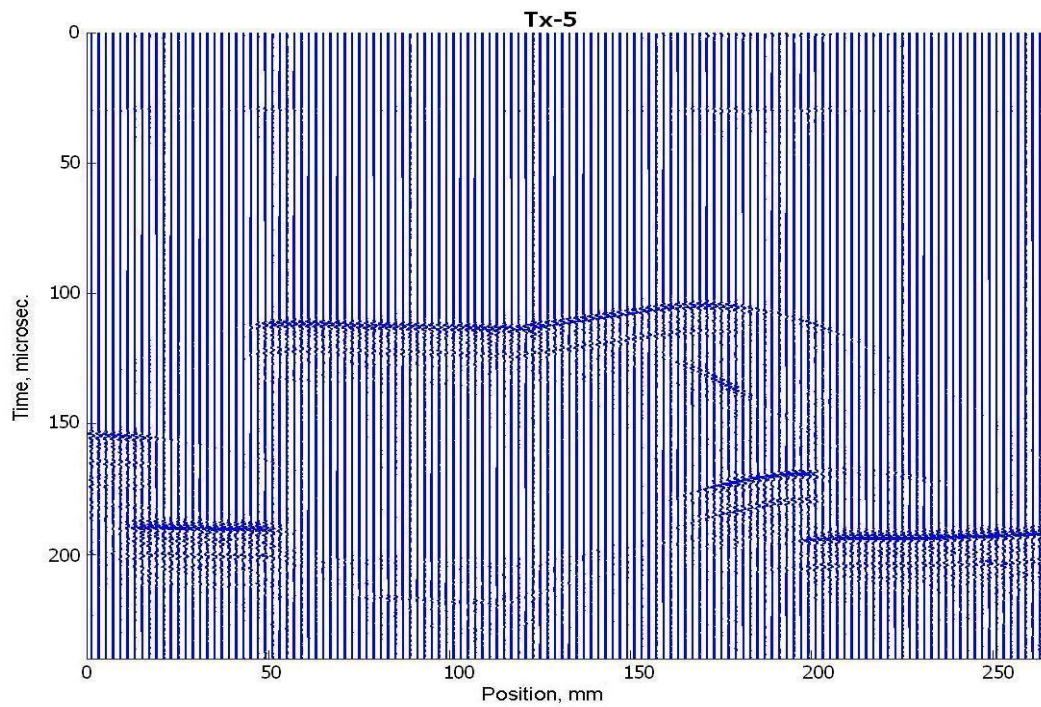


Tx-8









■ **CONCLUSION:**

What's ahead?

- ***Larger transducer arrays.***
- ***Optimized software.***
- ***3D solid modelling.***
- ***Anisotropic/fracture models.***
- ***Exhaustive dataset – a million traces?***

■ ***ACKNOWLEDGEMENTS***

***We thank the sponsors of
the CREWES Project for
supporting this work.***