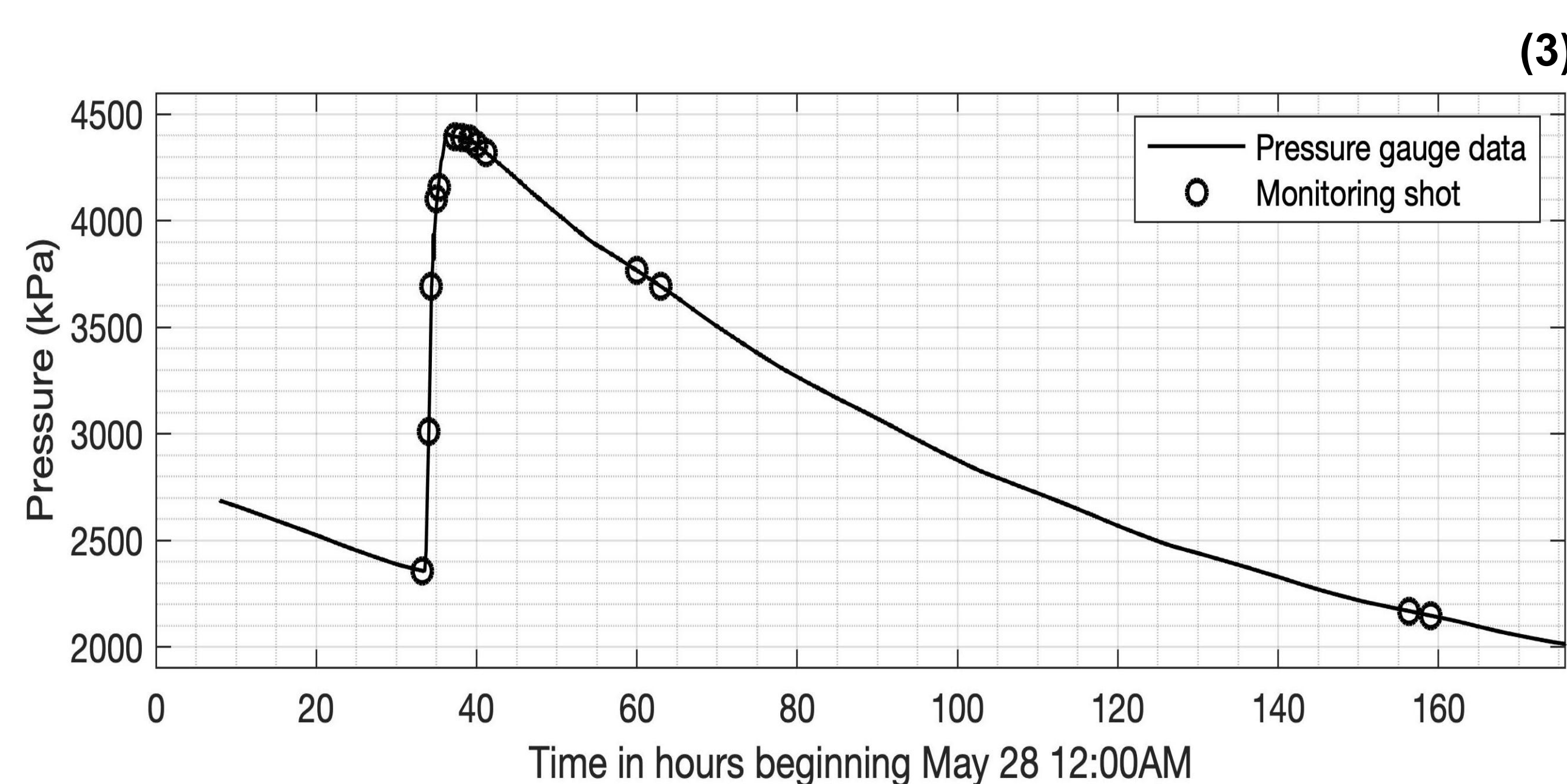
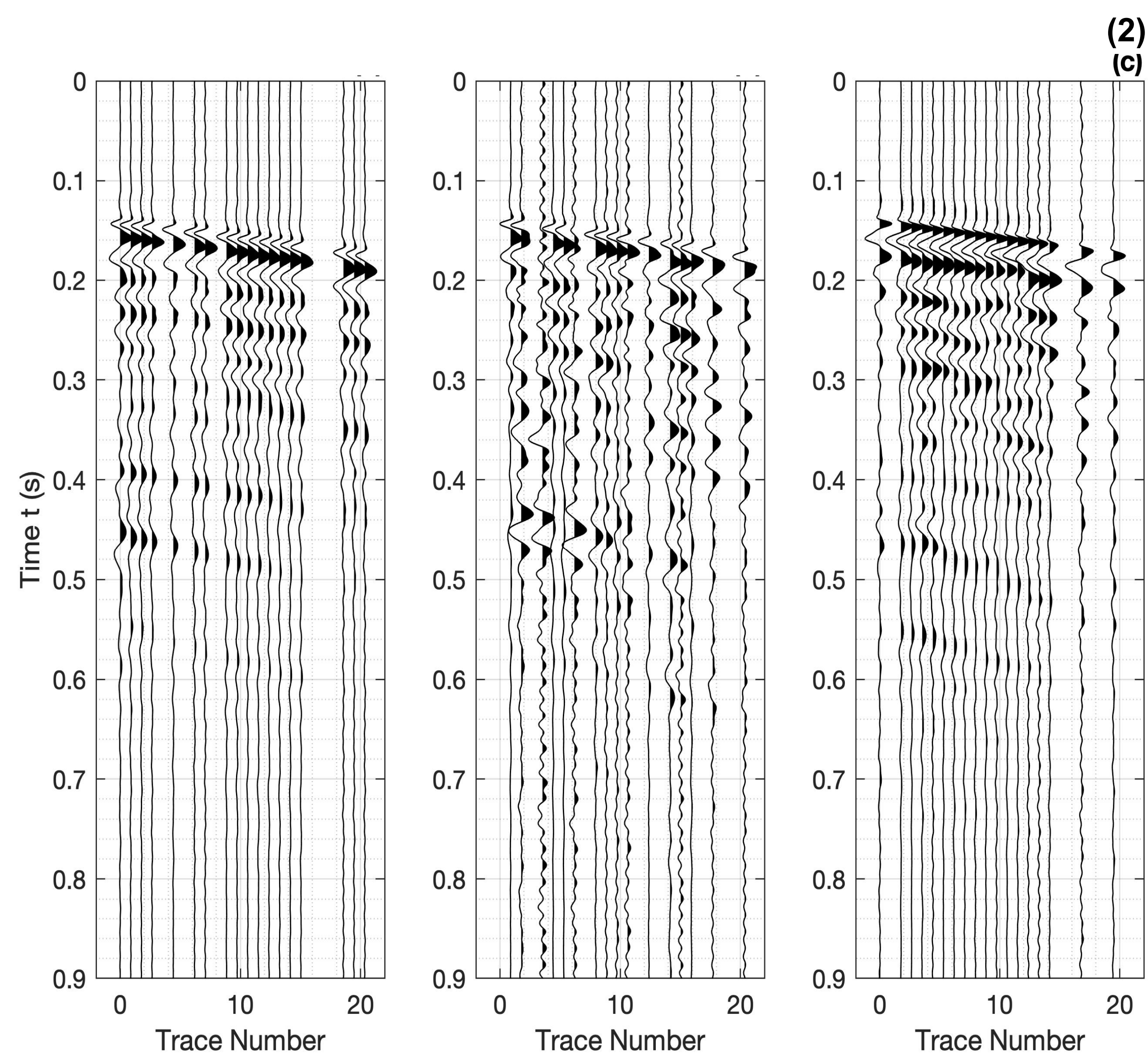
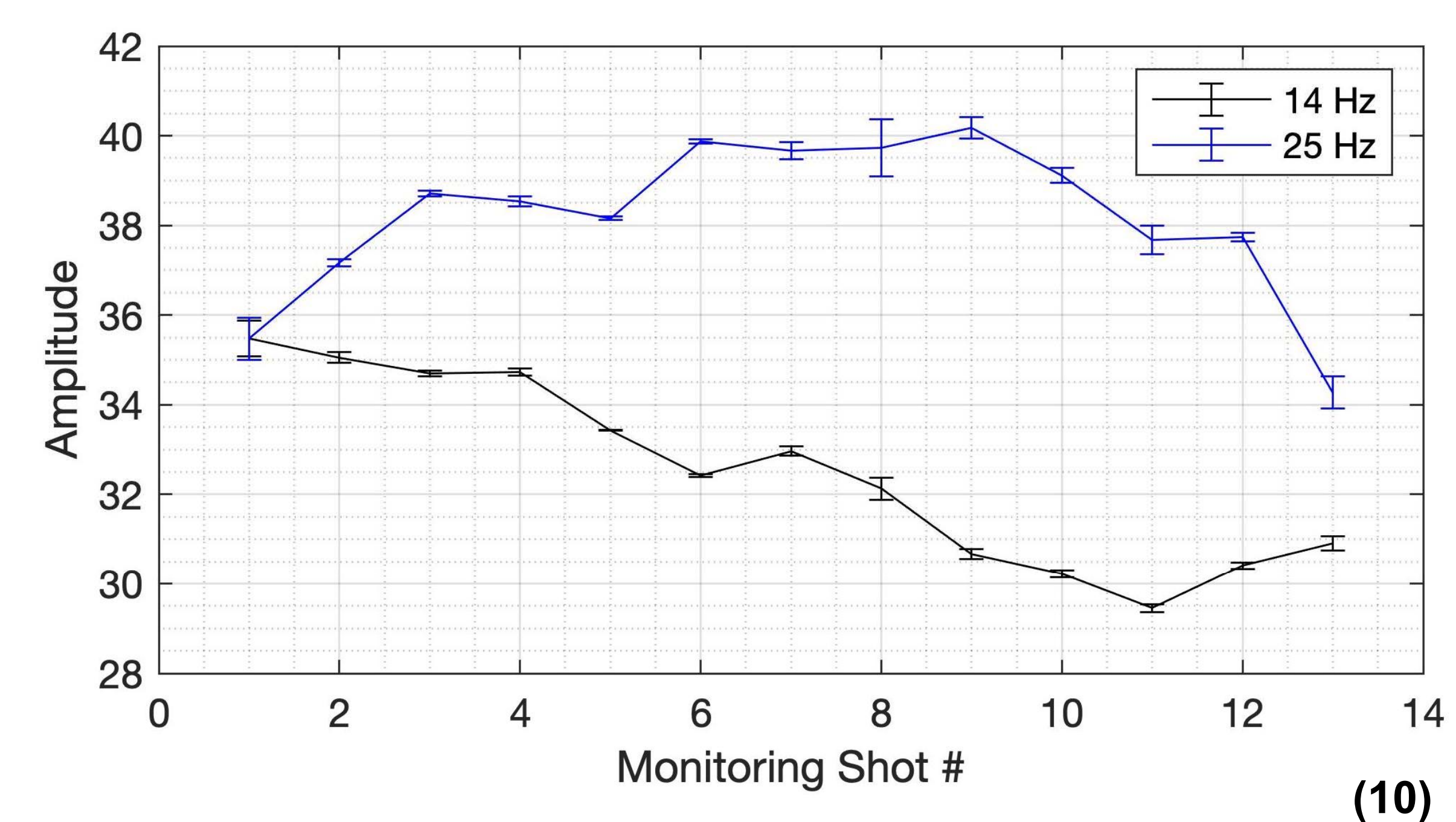
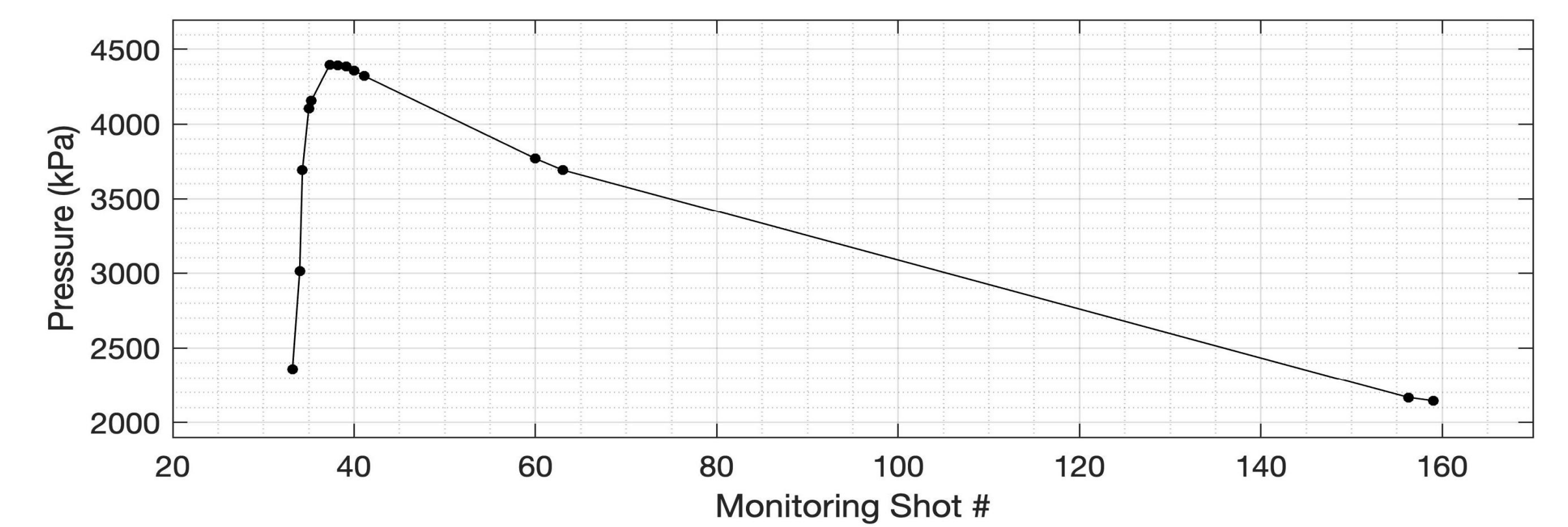
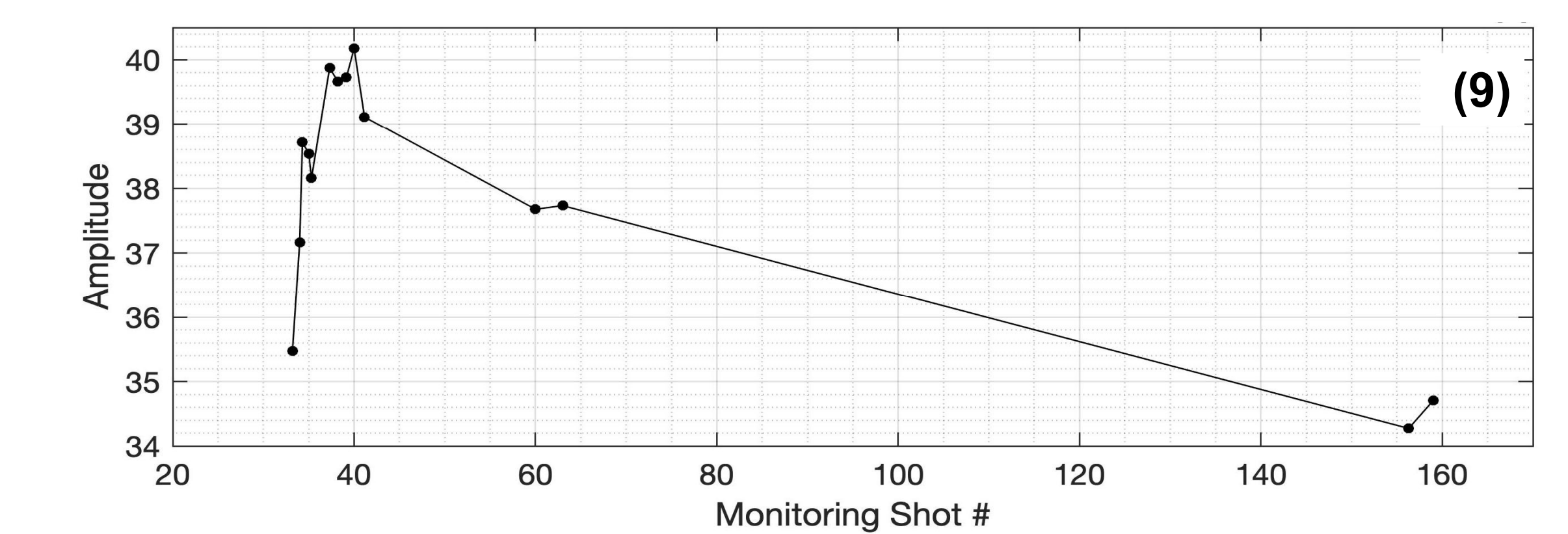
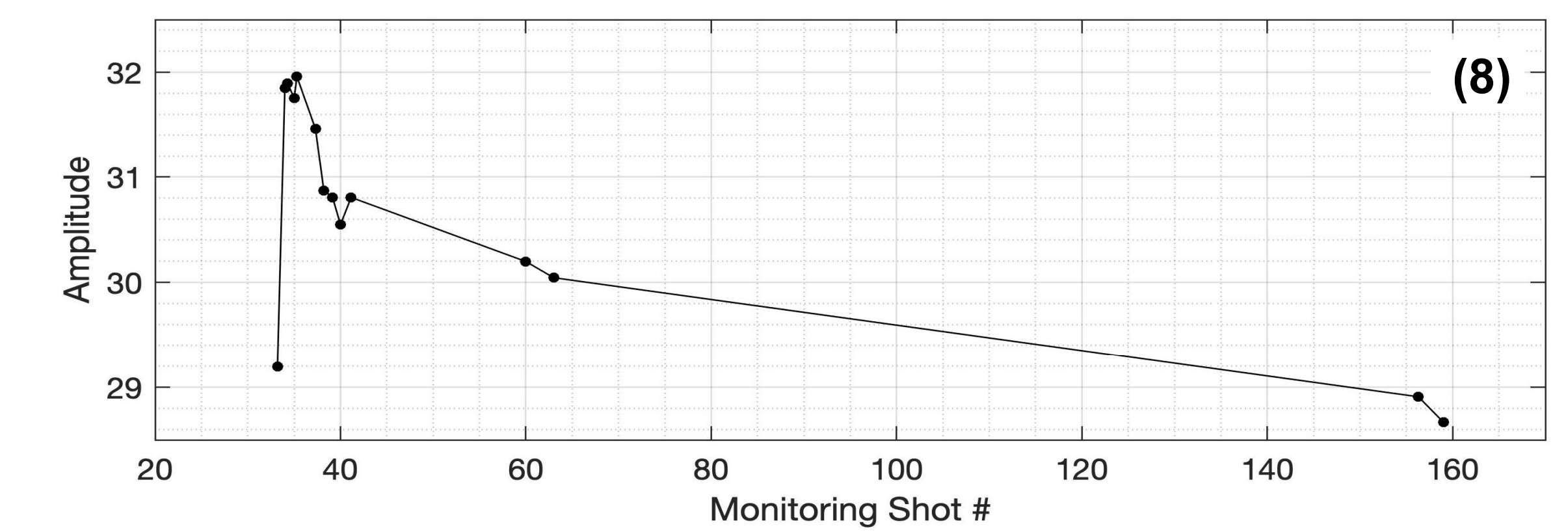
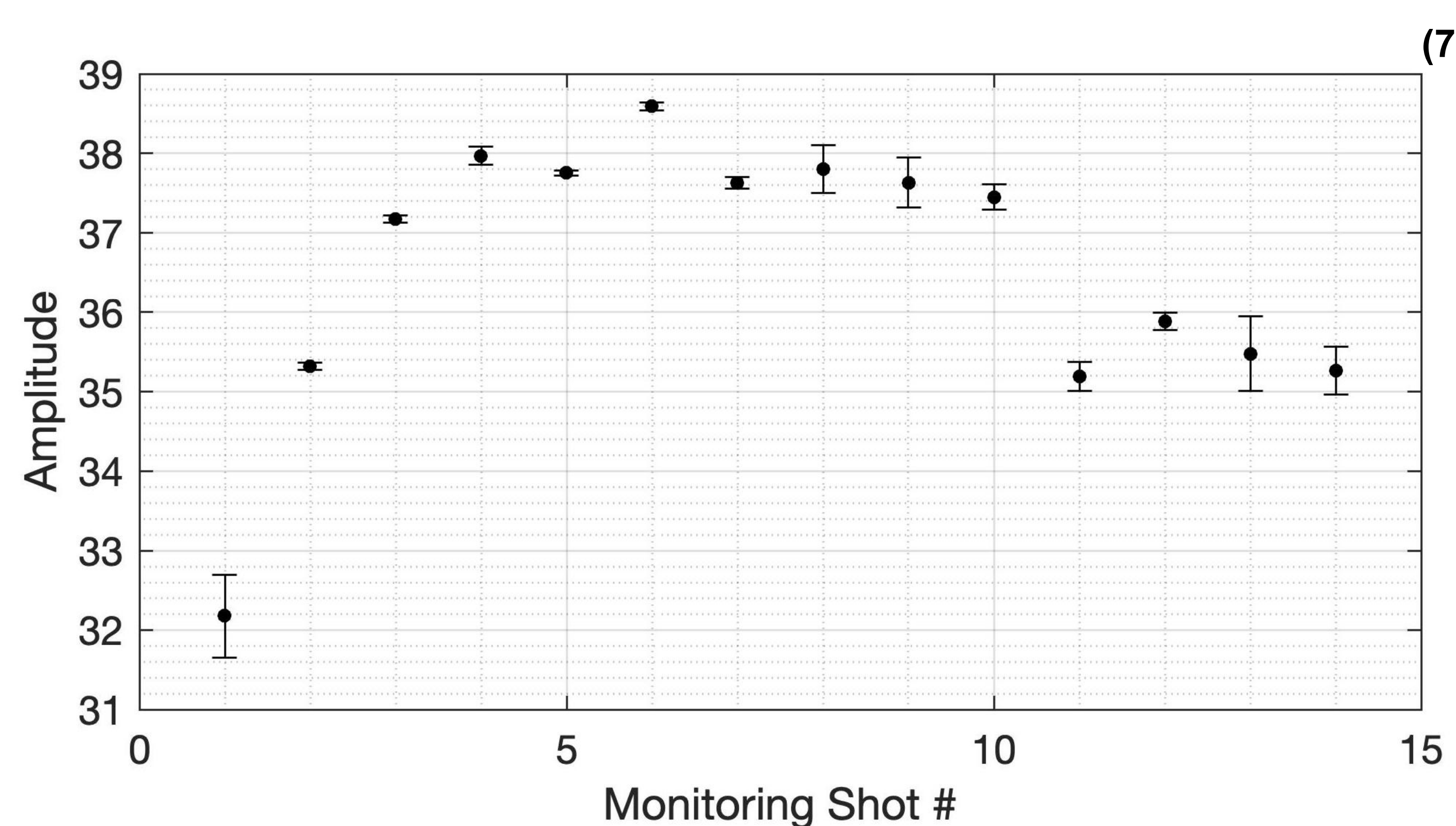
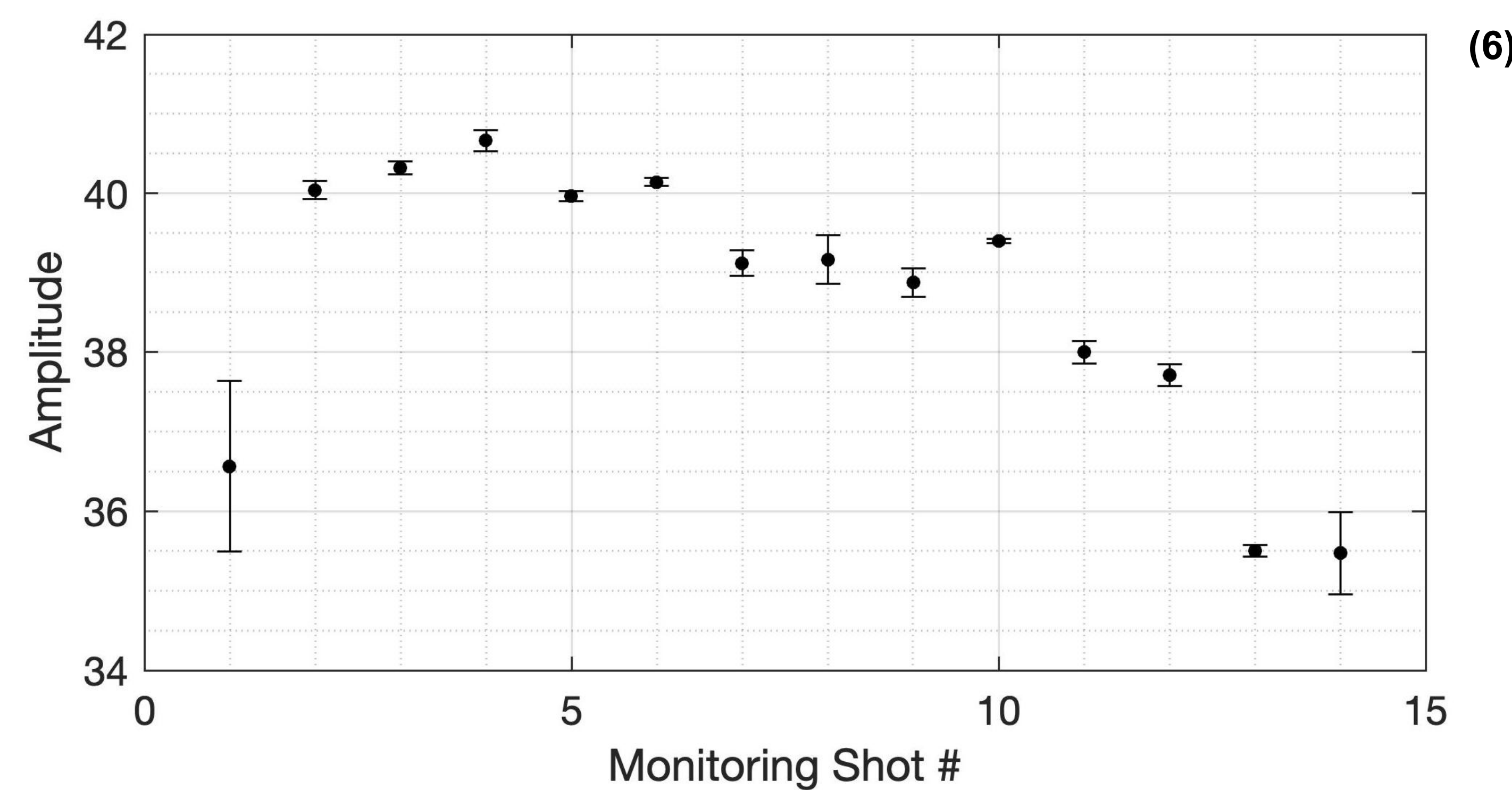
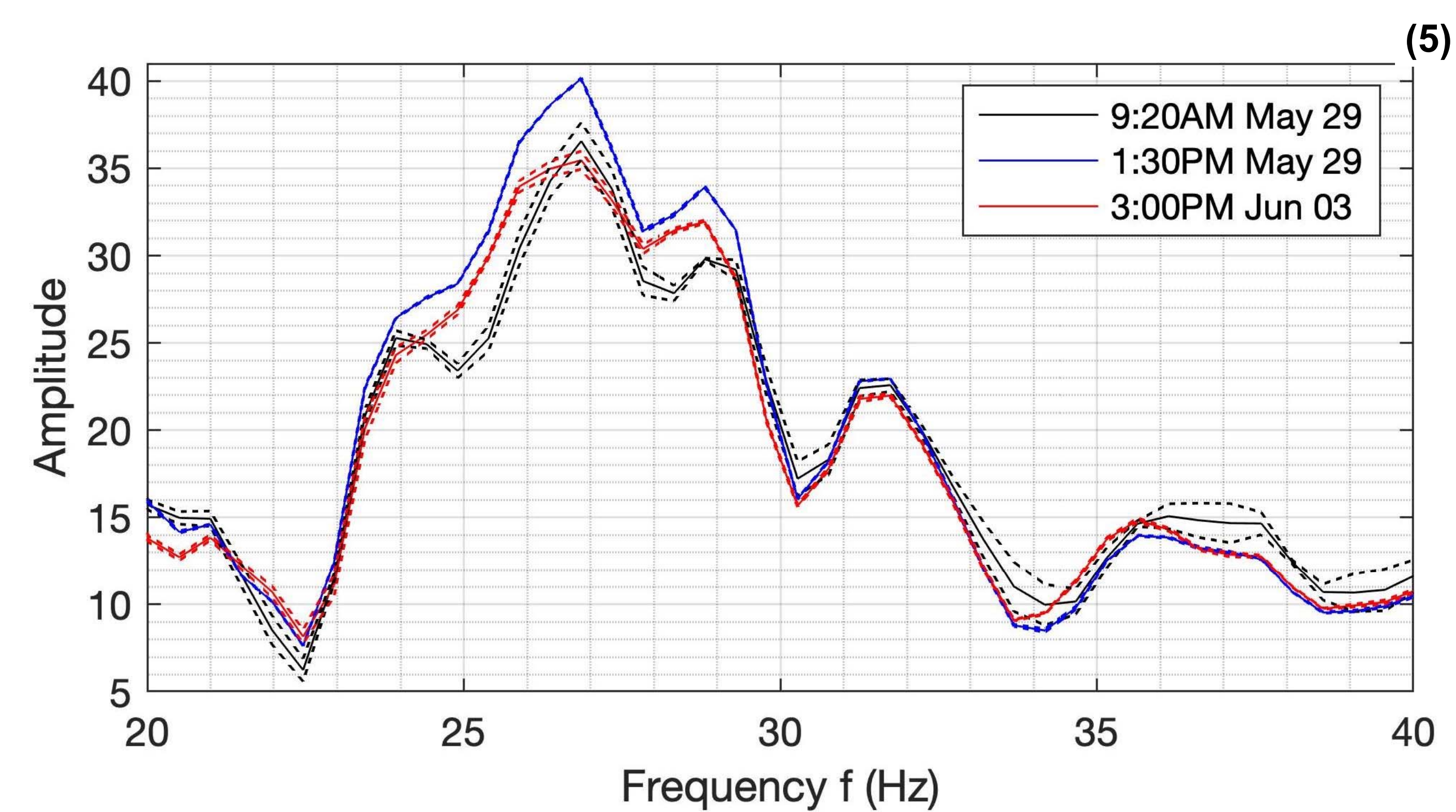
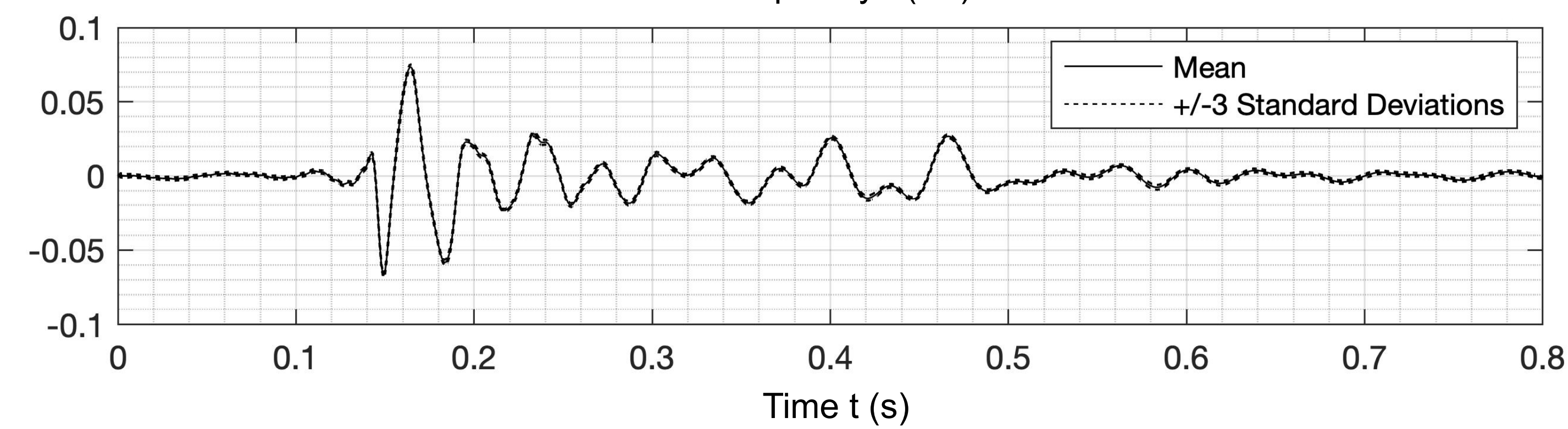
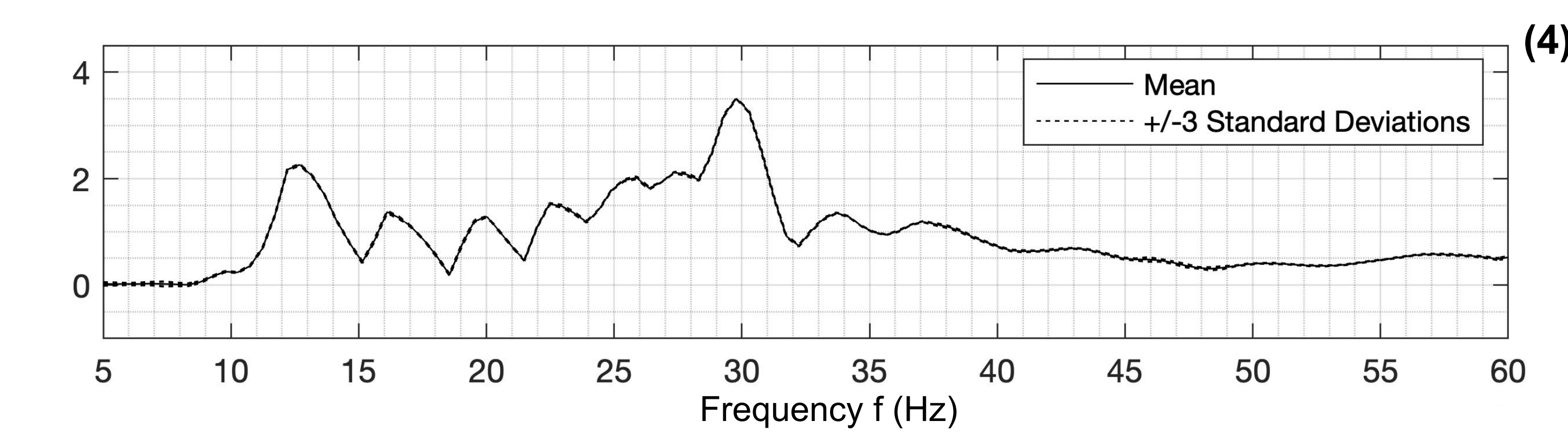
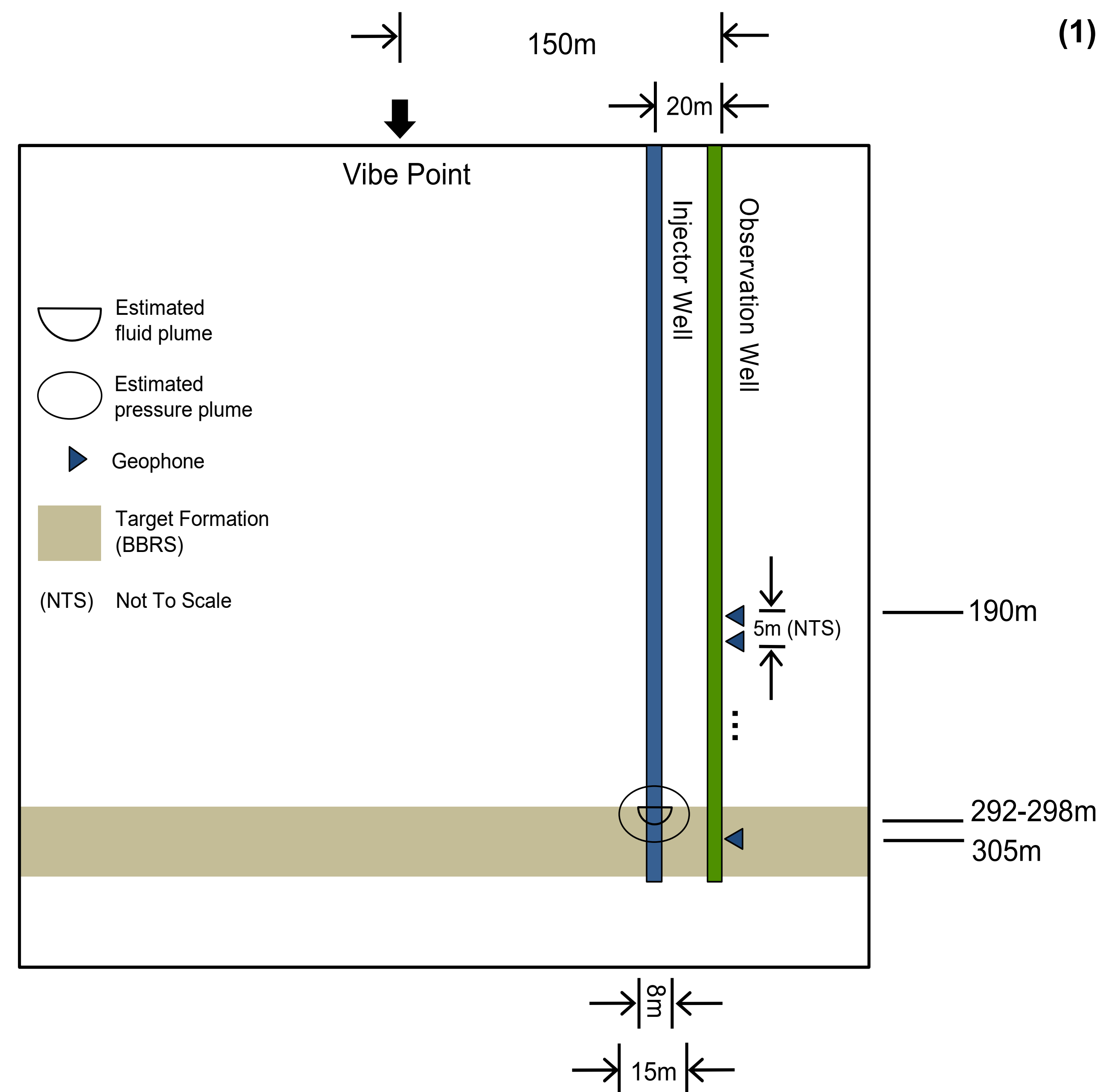


Detection of transient time-lapse seismic signatures associated with CO₂ injection

Kris Innanen, Don Lawton, Kevin Hall, Kevin Bertram and Malcolm Bertram



1. Geometry and scale
2. Example shot records (V, H1, H2)
3. Pressure data at injection
4. Repeatability (f and t domains)
5. Level 17, V, 3 spectra (NB 27Hz)
6. 27Hz: V amplitude. versus shot number
7. 25Hz: H2 amplitude versus shot number
8. (a) Amplitude; (b) pressure vs shot time (V)
9. (a) Amplitude; (b) pressure vs shot time (H2)
10. Level 17 V component: low vs high f