

SOME 2D RESULTS FROM THE PHYSICAL SEISMIC MODELING FACILITY

***JOE WONG, KEVIN HALL, ERIC GALLANT,
MALCOLM BERTRAM, and
HENRY BLAND***



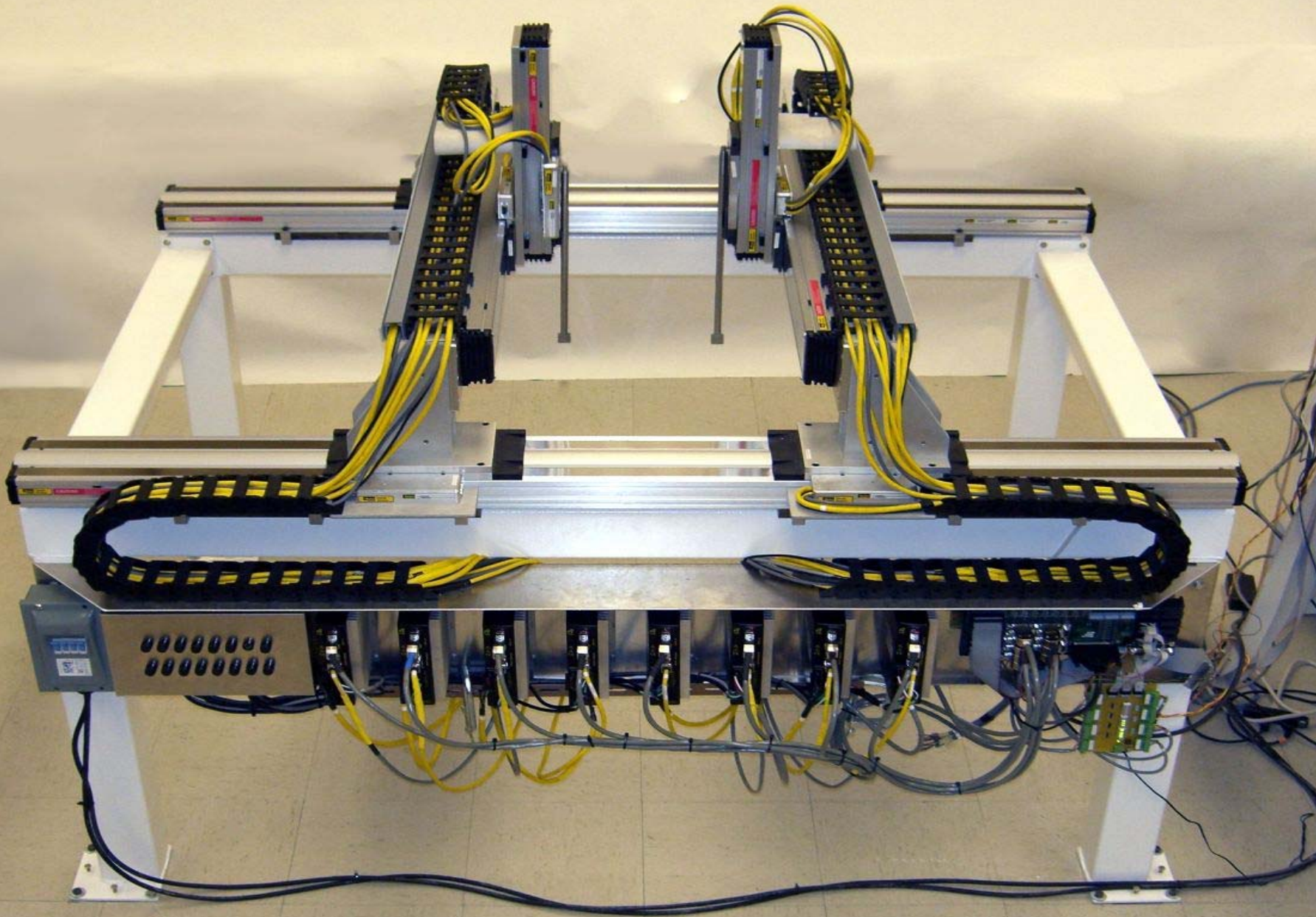
OUTLINE OF PRESENTATION

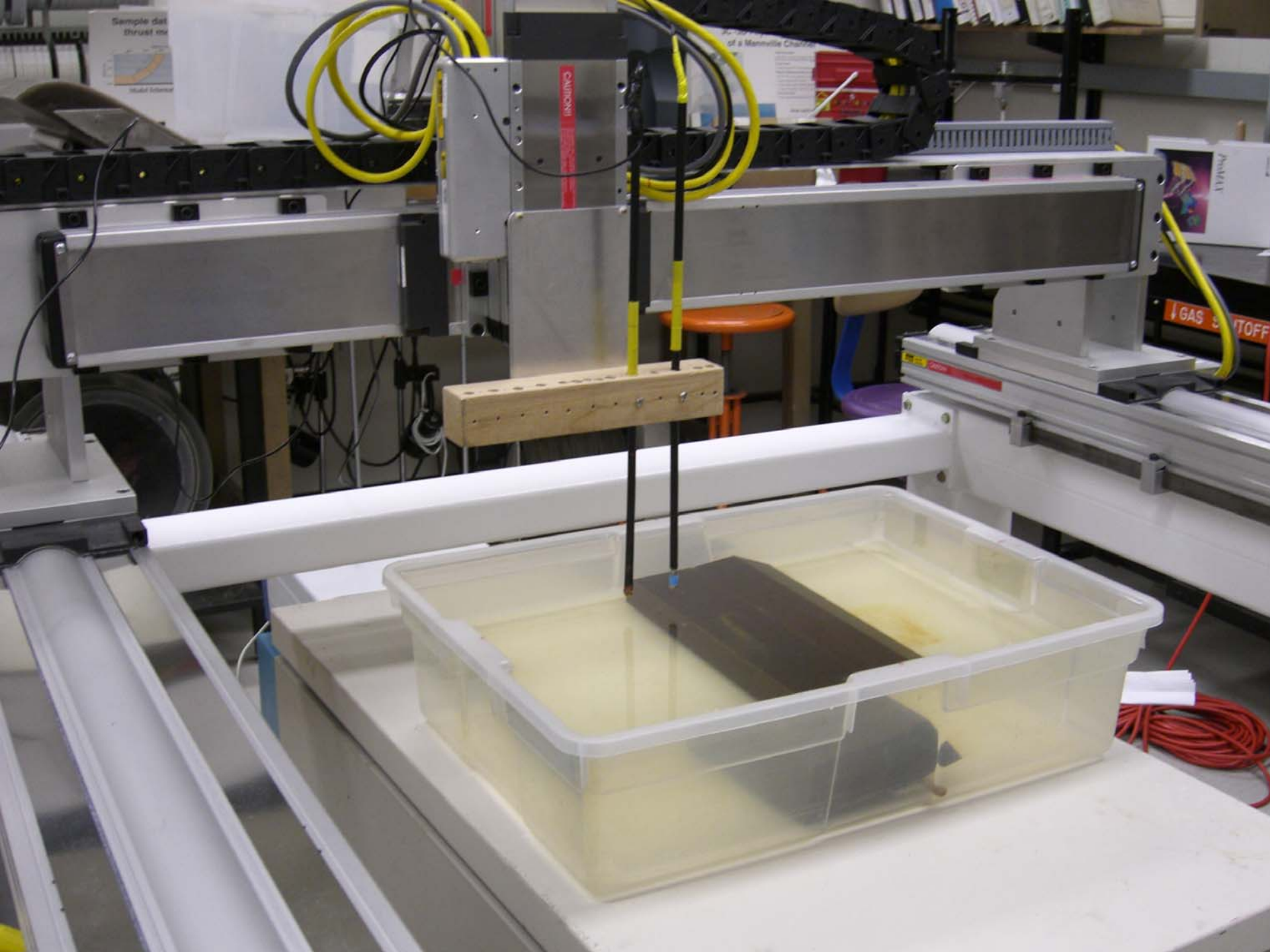
- ***INTRODUCTION***
- ***THE POSITIONING SYSTEM***
- ***2D TEST MEASUREMENTS***
- ***CONCLUSION***
- ***ACKNOWLEDGEMENTS***

■ ***INTRODUCTION***

- BACKGROUND REMARKS

■ *THE POSITIONING SYSTEM*



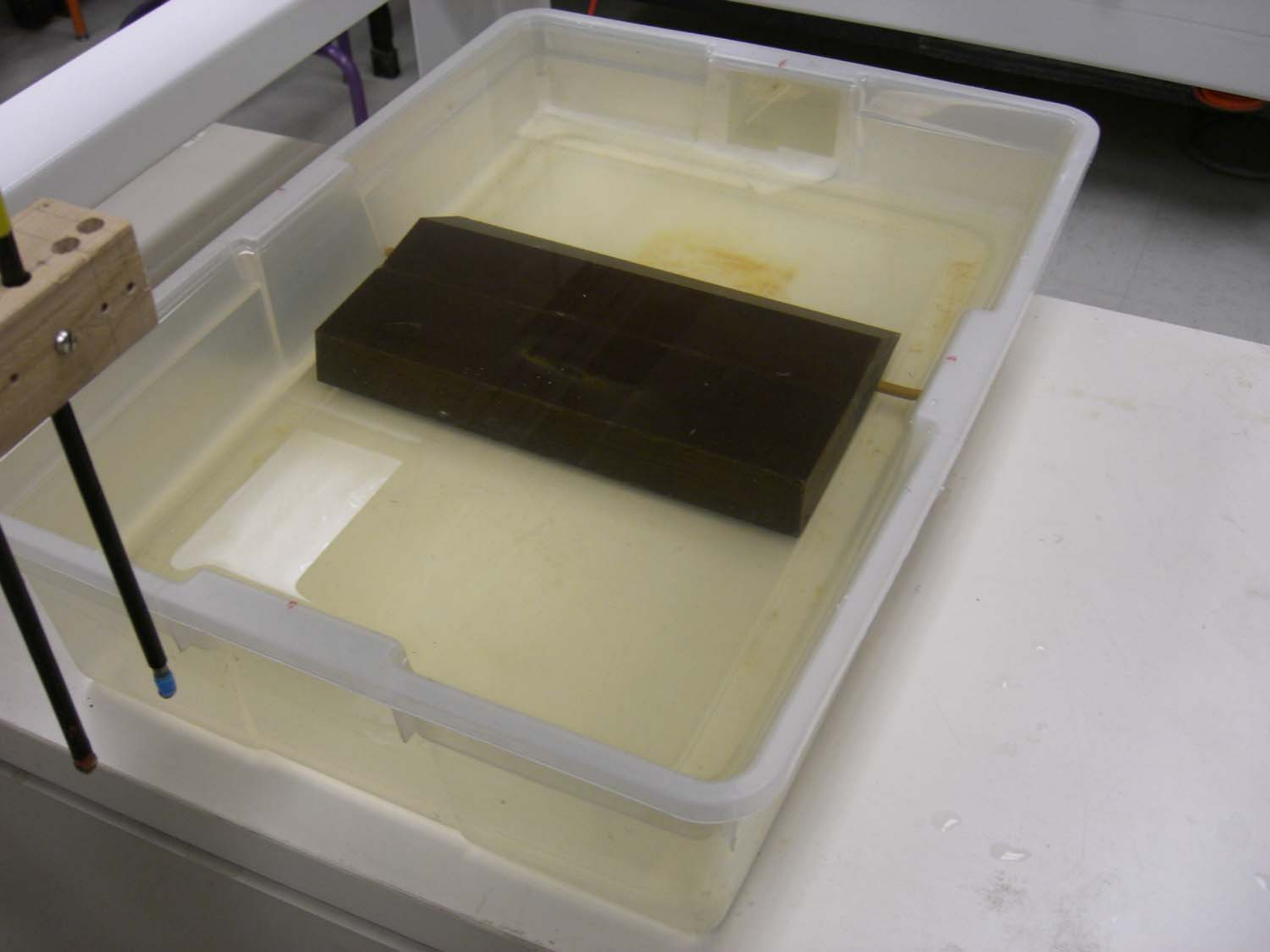


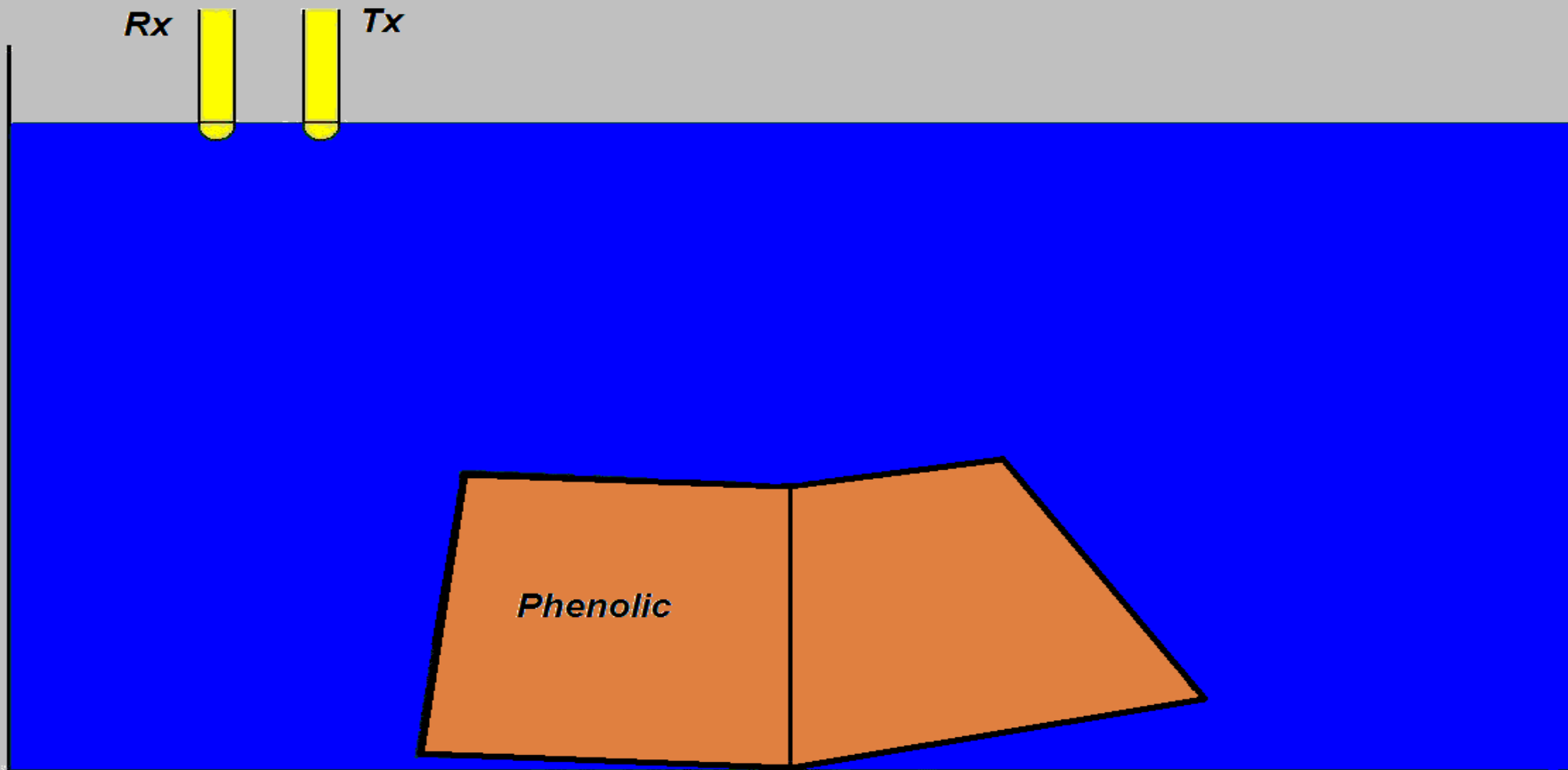
Sample data
thrust m
Model Interact

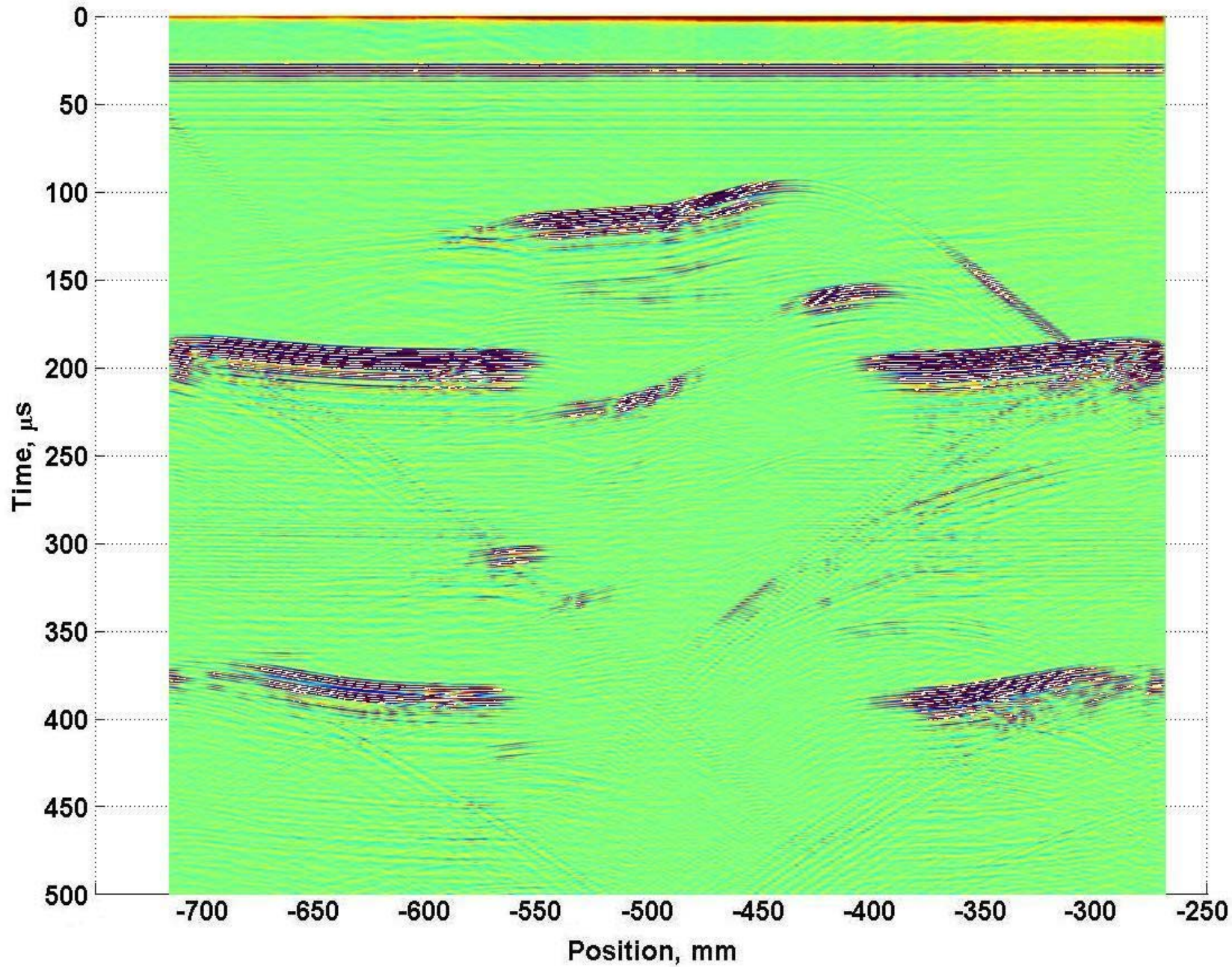
CAUTION

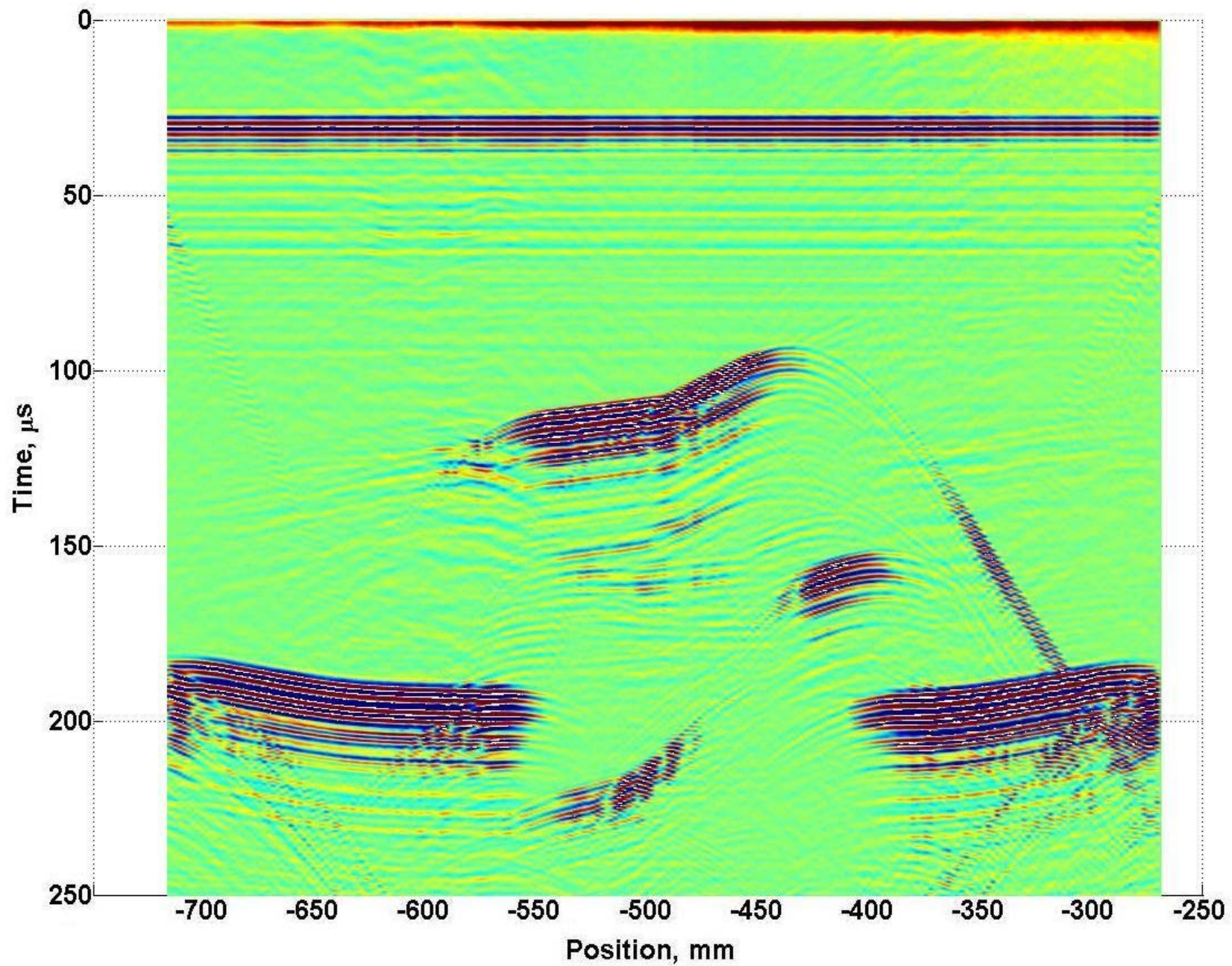
GAS STOP

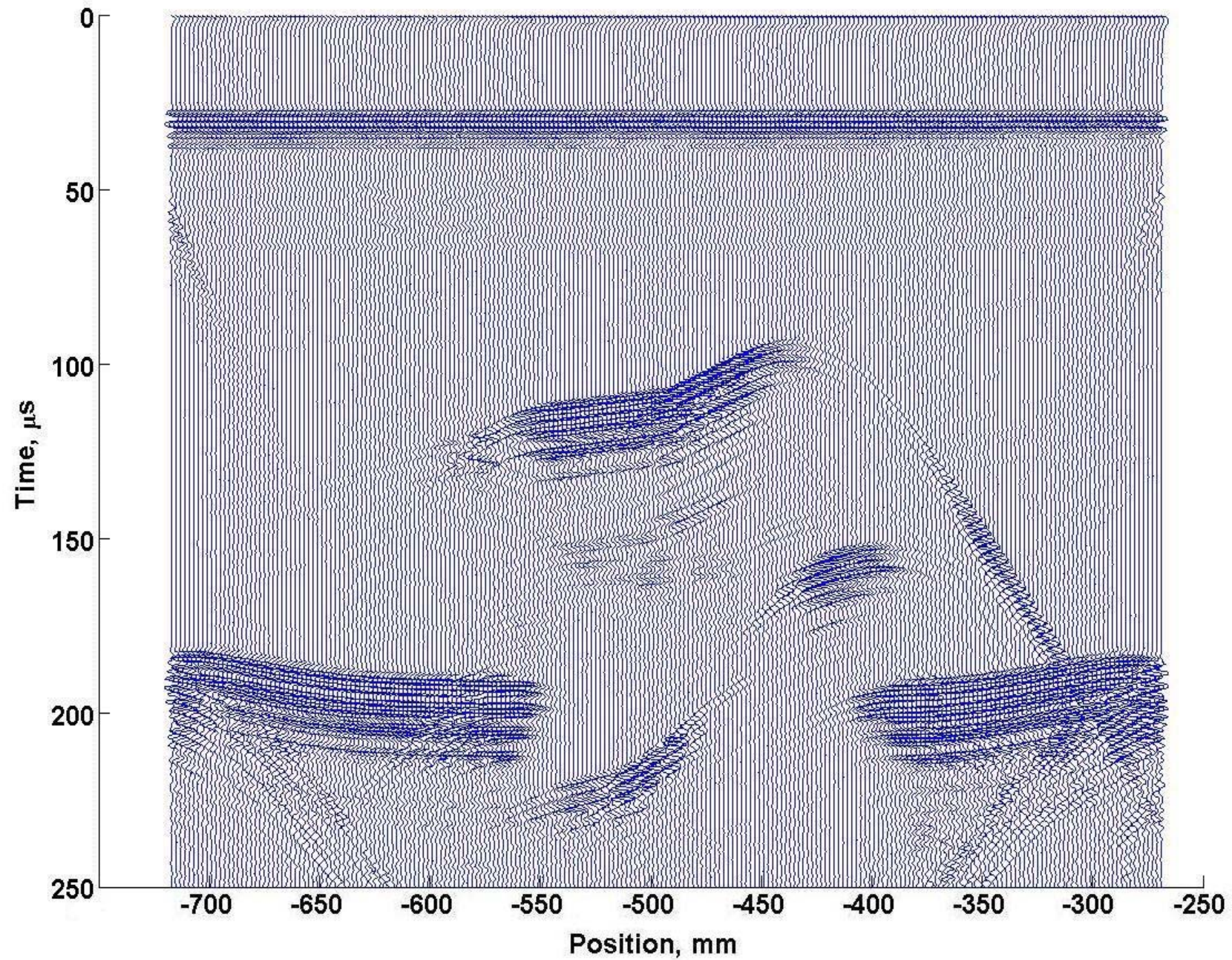
■ *2D TEST MEASUREMENTS*

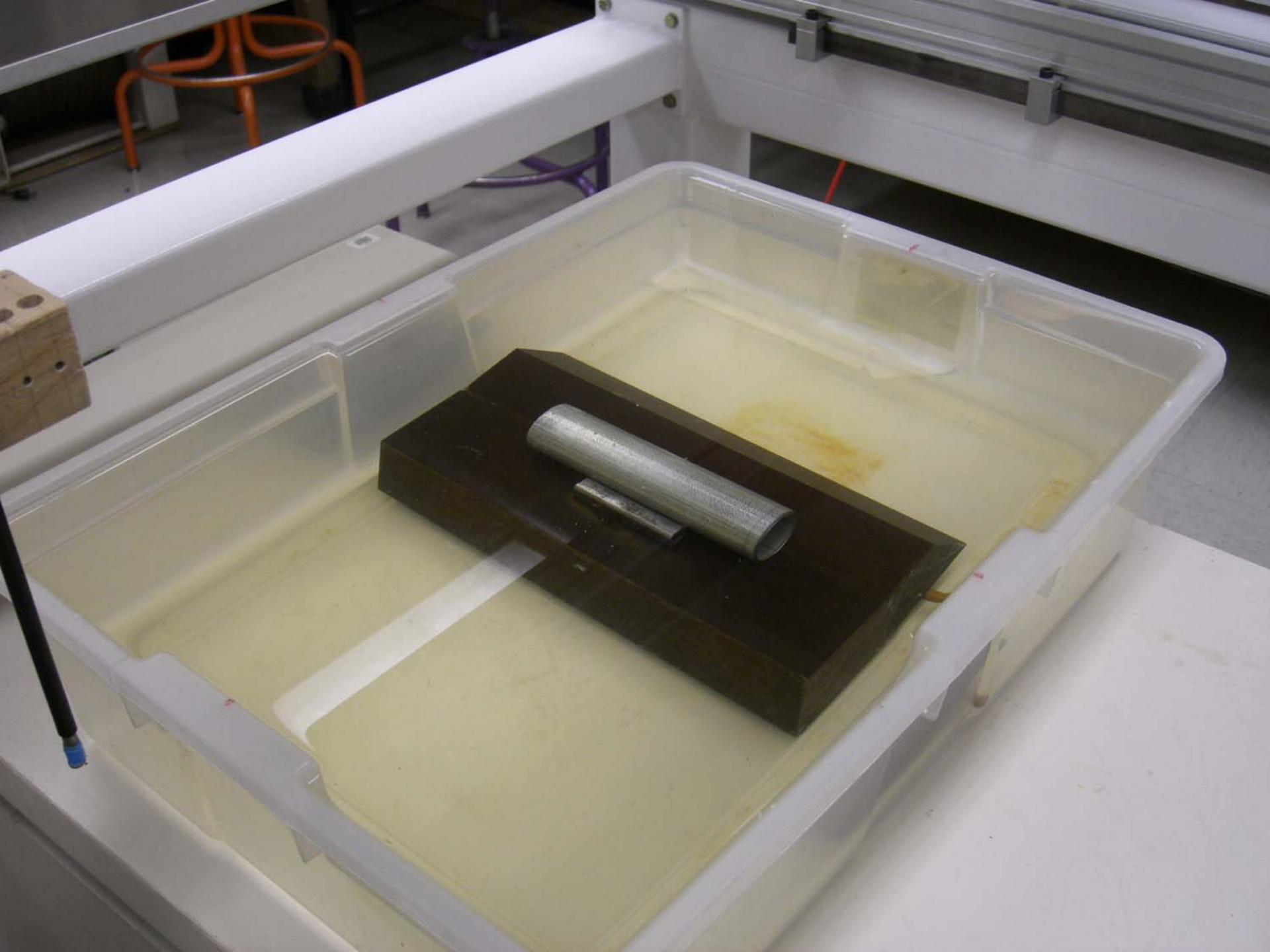


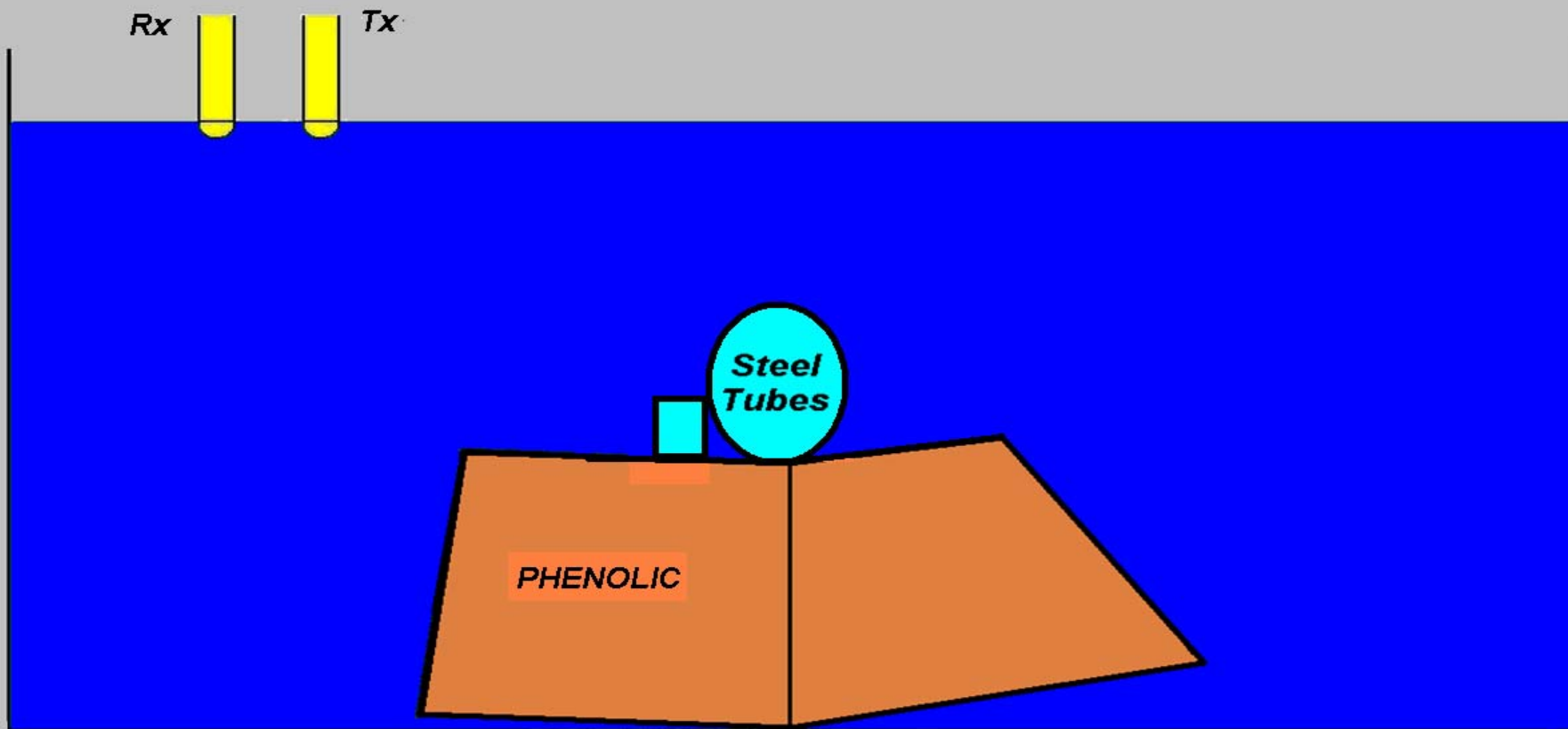


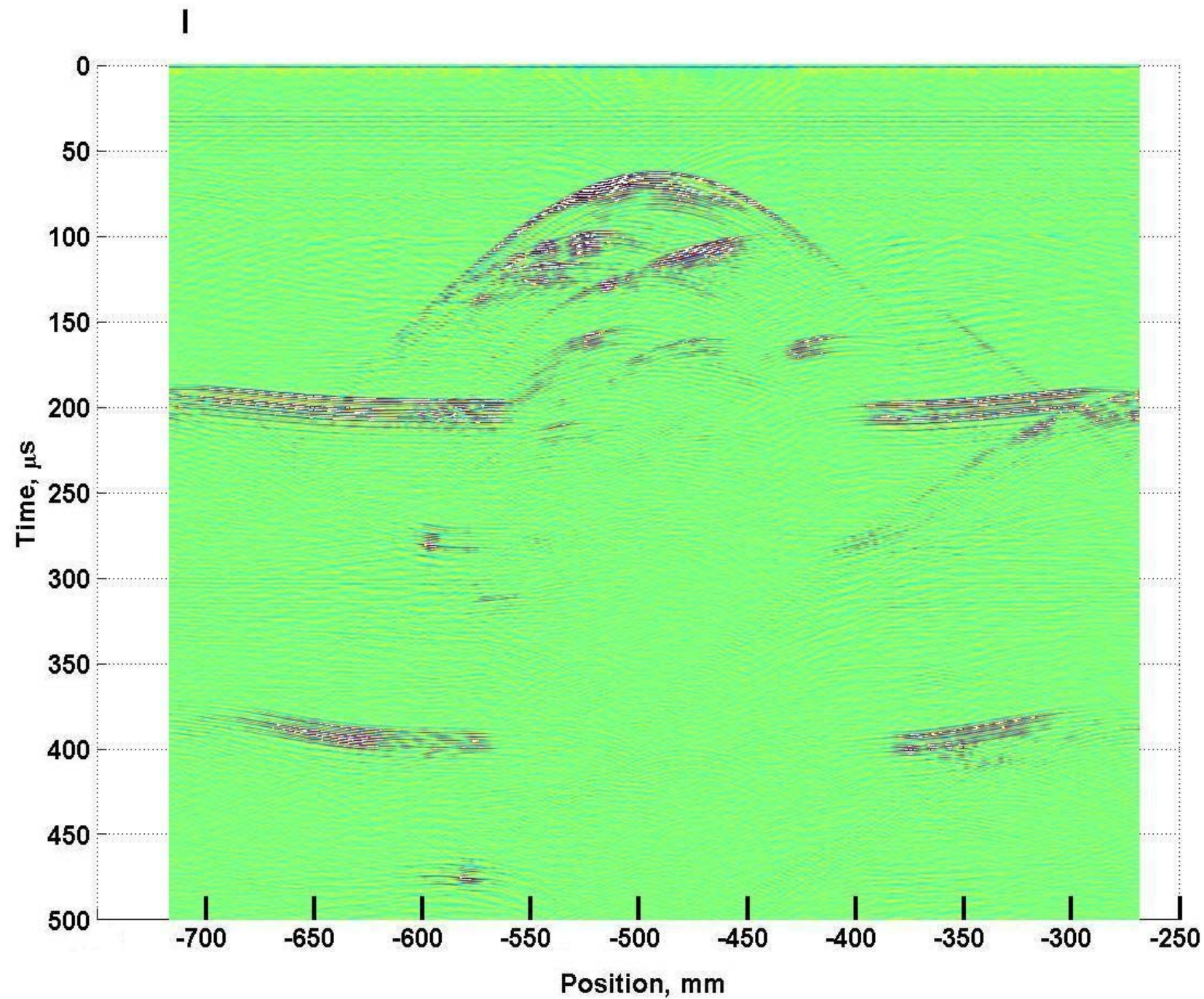


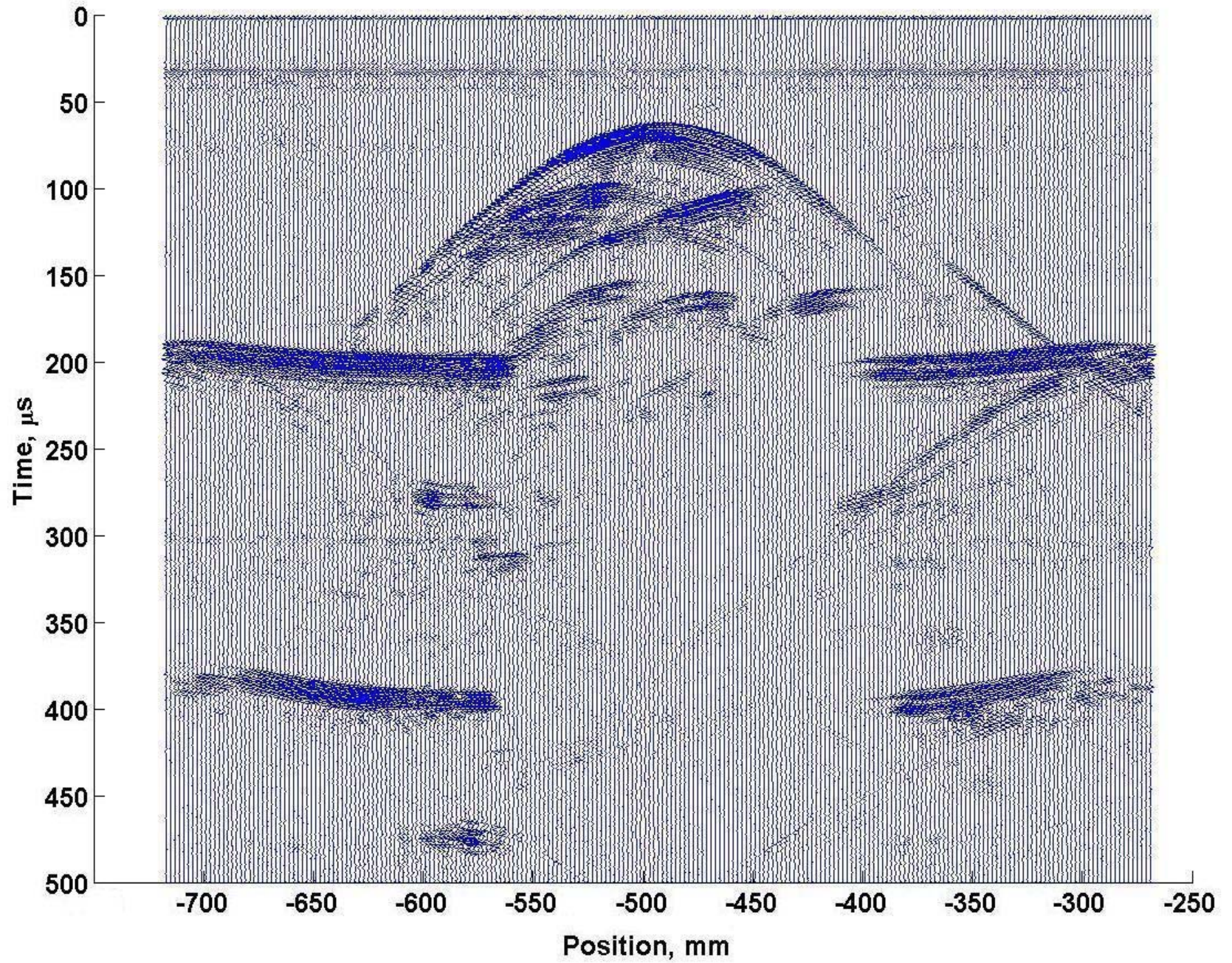


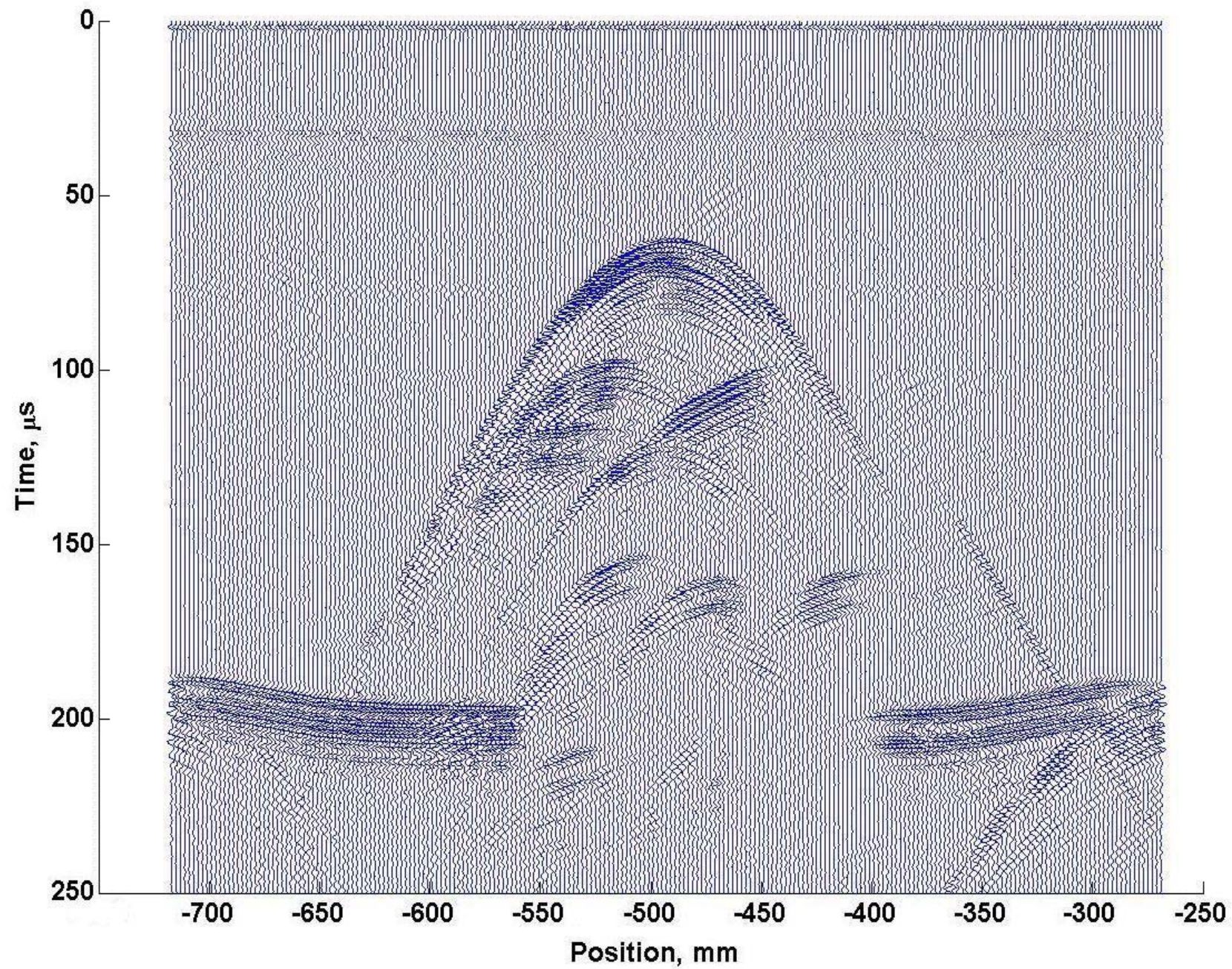


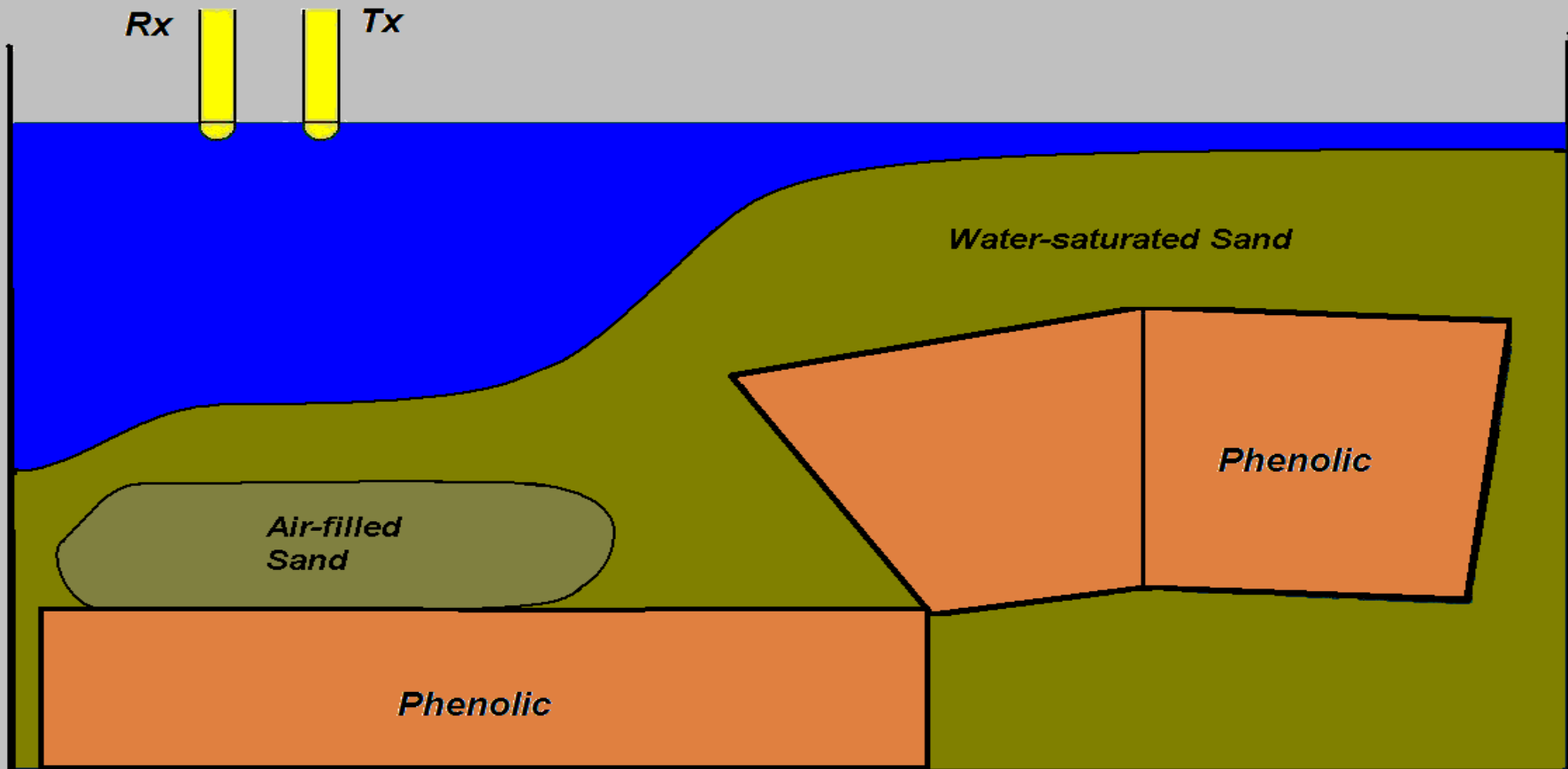


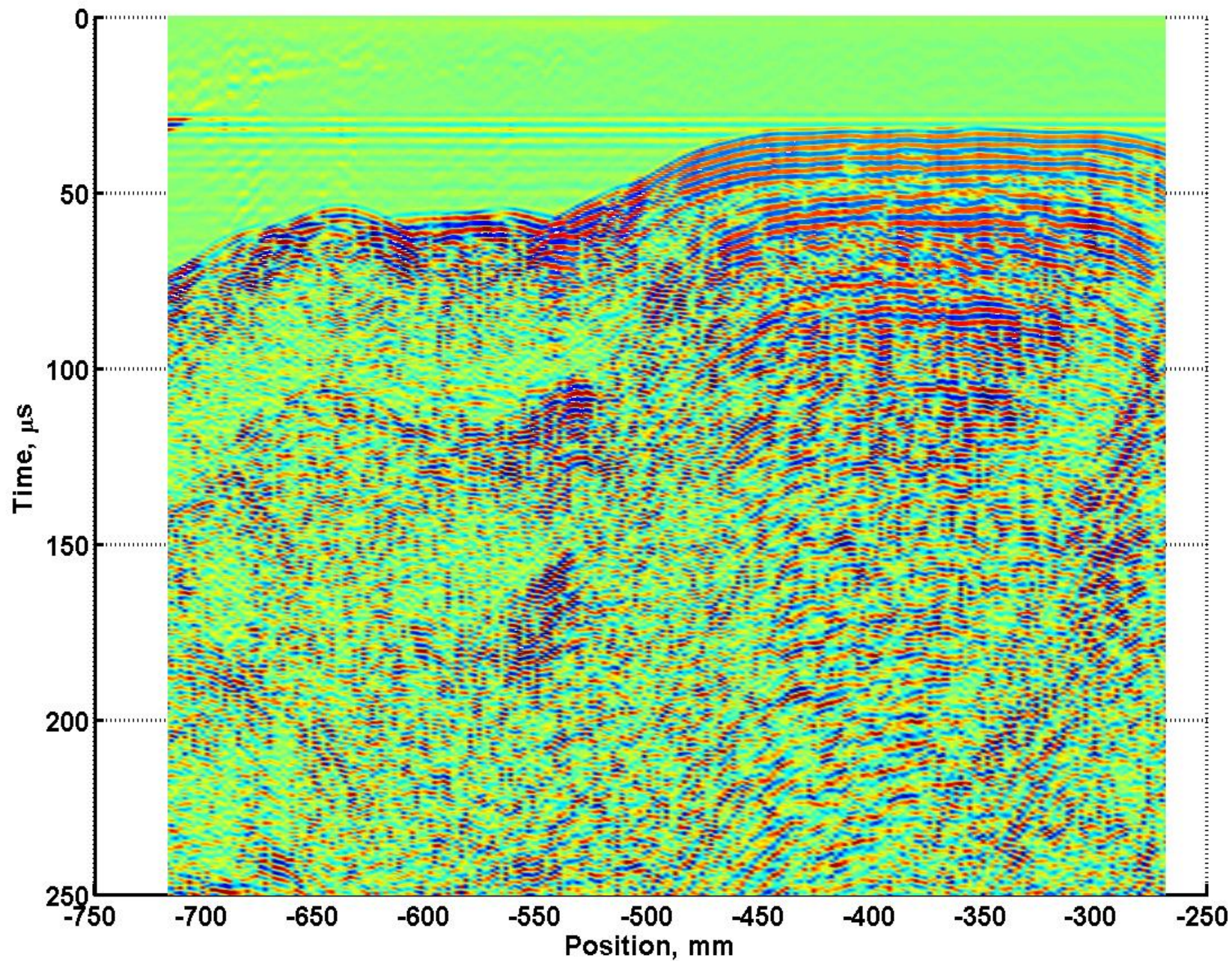








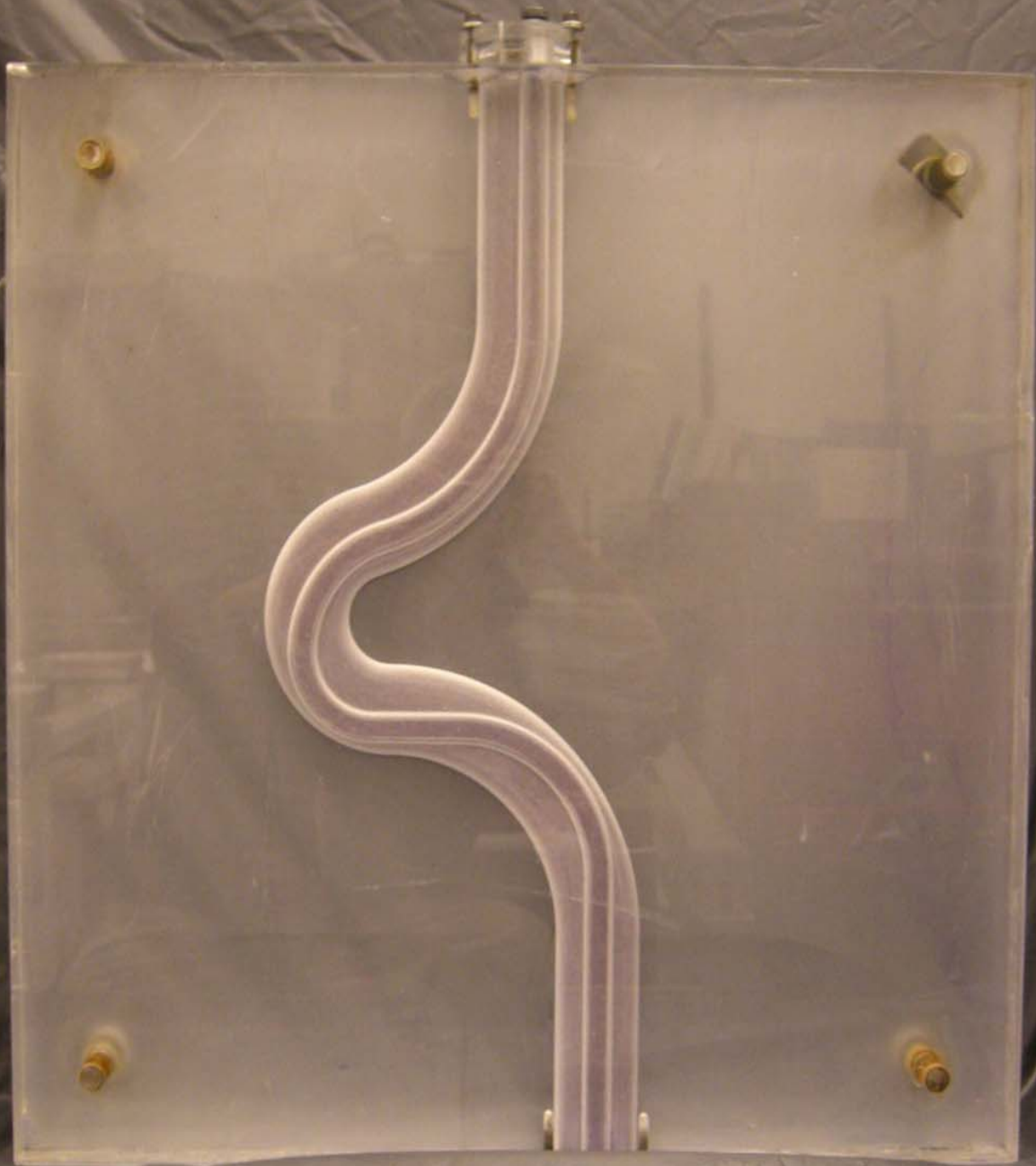




■ **CONCLUSION**

What's ahead?

- Master control program***
- Array of 16 marine hydrophones***
- 3D-3C elastic modeling***
- Fluid replacement experiment***



■ ***ACKNOWLEDGEMENTS***

***We thank the sponsors of
the CREWES Project for
supporting this work.***